

**August 20, 2010  
Millard Public Schools  
Total Enrollment**

Elementary		K	1	2	3	4	5	SpEd	Total	Current Change	YTD Change	Official 10-11 Enrollment
								Cluster Prgm				
Abbott	(3 unit)	66	75	82	68	69	72		432	--	--	--
Ackerman	(4 unit)	69	79	90	93	90	84		505	--	--	--
Aldrich	(3 unit)	60	92	59	66	96	71		444	--	--	--
Black Elk	(4 unit)	71	85	85	92	102	89		524	--	--	--
Bryan	(3 unit)	62	65	69	58	63	66		383	--	--	--
Cather	(3 unit)	76	77	75	83	76	71		458	--	--	--
Cody	(2 unit)	29	34	28	34	38	25	23	211	--	--	--
Cottonwood	(3 unit)	62	62	53	53	55	60		345	--	--	--
Disney	(3 unit)	59	32	41	41	42	32	16	263	--	--	--
Ezra Millard	(3 unit)	62	62	58	67	59	69	10	387	--	--	--
Harvey Oaks	(2 unit)	39	49	45	43	49	57		282	--	--	--
Hitchcock	(2 unit)	28	33	26	28	29	27	19	190	--	--	--
Holling Heights	(3 unit)	67	62	59	59	57	64	6	374	--	--	--
Montclair	(4 unit)	84	94	85	86	89	85		523	--	--	--
Morton	(3 unit)	59	46	53	52	63	72	14	359	--	--	--
Neihardt	(4 unit)	78	101	84	96	104	97		560	--	--	--
Norris	(3 unit)	58	72	58	54	58	65		365	--	--	--
Reagan	(4 unit)	124	107	126	109	98	78		642	--	--	--
Reeder	(3 unit)	99	82	67	101	83	81	18	531	--	--	--
Rockwell	(3 unit)	53	55	59	51	57	51	18	344	--	--	--
Rohwer	(3 unit)	63	76	67	81	79	81	17	464	--	--	--
Sandoz	(3 unit)	52	52	53	59	40	49		305	--	--	--
Upchurch	(3 unit)	105	110	85	69	61	43		473	--	--	--
Wheeler	(4 unit)	75	91	107	100	110	111	21	615	--	--	--
Willowdale	(3 unit)	60	56	63	68	68	90		405	--	--	--
<b>Totals</b>		<b>1660</b>	<b>1749</b>	<b>1677</b>	<b>1711</b>	<b>1735</b>	<b>1690</b>	<b>162</b>	<b>10384</b>	--	--	--

Middle		6	7	8					SpEd	Total	Change	Change	Official 10-11 Enrollment
									Prgm*				
Andersen MS		232	253	267					0	752	--	--	--
Beadle MS		342	270	307					28	919	--	--	--
Central MS		250	249	254					22	753	--	--	--
Kiewit MS		287	283	308					0	878	--	--	--
North MS		245	317	253					18	815	--	--	--
Russell MS		280	287	281					0	848	--	--	--
MS Alternative		0	7	16						23	--	--	--
<b>Totals</b>		<b>1636</b>	<b>1666</b>	<b>1686</b>					<b>68</b>	<b>4988</b>	--	--	--

High			9	10	11	12				Total	Change	Change	Official 10-11 Enrollment
South HS			503	500	478	506			28	1987	--	--	--
West HS			595	557	512	518			34	2182	--	--	--
Horizon HS			0	0	44	89				133	--	--	--
<b>Totals</b>			<b>1711</b>	<b>1675</b>	<b>1625</b>	<b>1686</b>			<b>82</b>	<b>6697</b>	--	--	--

**\*Sped Program Included in MS/HS Grade Level totals**

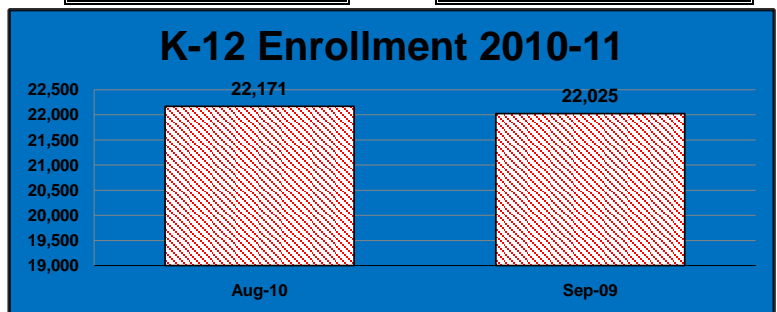
Preschool	SPED	Not SPED	Total
Bryan	3	35	38
Cody	48	33	81
Cody Early Start	6	9	15
Disney	17	13	30
Hitchcock	20	8	28
Holling Heights	0	25	25
Montclair	20	11	31
Montclair Montessori	1	61	62
Neihardt	1	35	36
Norris ELL		17	17
Norris Montessori	1	15	16
Rockwell	0	32	32
Sandoz	9	6	15
Sandoz ELL	1	35	36
Wheeler	26	9	35
Homebased Infants			71
<b>TOTAL</b>			<b>568</b>

Career Academies	NHS	SHS	WHS	Horizon	TOTAL
Culinary	7	4	4		15
Education	7	4	20		31
Entrepreneurship	3	6	7		16
Finance	4	4	1		9
Health Services	19	13	11		43
TDL	3	1		4	8
<b>Ombudsmen</b>	(Primary and Secondary Enrollment)				<b>12</b>

Contracted SPED	40	--	--	--
Young Adult Program	52	--	--	--
Ombudsmen (Primary)	10	--	--	--
<b>Total District K-12</b>	<b>22171</b>	--	--	--
<b>Total District PreK-12</b>	<b>22739</b>	--	--	--

8/20/2010	
Elementary	10384
Middle School	4988
High School	6697
Contracted	40
Young Adult	52
Ombudsmen (Primary)	10
<b>TOTAL</b>	<b>22171</b>

9/18/2009	
Elementary	10300
Middle Sch	4949
High Sch	6677
Contracted	44
Young Adult	55
Ombudsmen (Primary)	N/A
<b>TOTAL</b>	<b>22025</b>



Elementary		Classroom Enrollment														Class Size W/out SPED
	K	1	2	3	4	5	Total	Current Change	YTD Change	Official 10/11 Enrollment						
Abbott	23	19	21	23	23	24										
	22	18	21	22	23	24										
	21	19	20	23	23	24										
		19	20													
Total Students	66	75	82	68	69	72	432	--	--	--				432		
Total Teachers	3	4	4	3	3	3	20							20.0		
Classroom Avg	22.00	18.8	20.5	22.7	23.0	24.0	22							22		
Ackerman	19	20	19	25	24	20										
	17	20	17	23	23	22										
	15	20	18	24	19	20										
	18	19	17	21	24	22										
			19													
Total Students	69	79	90	93	90	84	505	--	--	--				505		
Total Teachers	4	4	5	4	4	4	25							25.0		
Classroom Avg	17.3	19.8	18.0	23.3	22.5	21.0	20							20		
Aldrich	20	23	20	22	23	24										
	20	23	20	23	24	24										
	20	23	19	21	24	23										
		23			25											
Total Students	60	92	59	66	96	71	444	--	--	--				444		
Total Teachers	3	4	3	3	4	3	20							20		
Classroom Avg	20.0	23.0	19.7	22.0	24.0	23.7	22							22		
Black Elk	18	21	22	24	26	23										
	17	22	20	24	25	22										
	19	22	22	22	25	22										
	17	20	21	22	26	22										
Total Students	71	85	85	92	102	89	524	--	--	--				524		
Total Teachers	4	4	4	4	4	4	24							24		
Classroom Avg	17.8	21.3	21.3	23.0	25.5	22.3	22							22		
Bryan	21	16	22	20	21	22										
	20	16	24	19	21	22										
	21	16	23	19	21	22										
		17														
Total Students	62	65	69	58	63	66	383	--	--	--				383		
Total Teachers	3	4	3	3	3	3	19							19		
Classroom Avg	20.7	16.3	23.0	19.3	21.0	22.0	20							20		
Cather	15	15	14	17	15	24	23	24	24	25	22	24				
	14	16	13	17	16		24	22	24	24	23	23				
Total Students	29	31	27	34	31	24	47	46	48	49	45	47	458	--	--	--
Total Teachers	2	2	2	2	2		2	2	2	2	2	2	22			
Classroom Avg	14.5	15.5	13.5	17.0	15.5		23.5	23.0	24.0	24.5	22.5	23.5	21			
Cody	14	17	14	17	19	25										
	15	17	14	17	19											
Total Students	29	34	28	34	38	25	23							188		
Total Teachers	2	2	2	2	2	1	3							11		
Classroom Avg	14.5	17.0	14.0	17.0	19.0	25.0	7.7							17		
Cottonwood	21	21	17	16	19	20										
	20	21	18	19	18	19										
	21	20	18	18	18	21										
Total Students	62	62	53	53	55	60	345	--	--	--				345		
Total Teachers	3	3	3	3	3	3	18							18		
Classroom Avg	20.7	20.7	17.7	17.7	18.3	20.0	19							19		
Disney	21	16	22	20	20	17										
	23	16	19	21	22	15										
	15															
Total Students	59	32	41	41	42	32	16							247		
Total Teachers	3	2	2	2	2	2	2							13		
Classroom Avg	19.67	16.00	20.50	20.50	21.00	16.00	8							19		

	K	1	2	3	4	5	SpEd Cluster Prgrm	Total	Current Change	YTD Change	Official 10/11 Enrollment	Class Size W/out SPED
Ezra Millard	20	22	20	22	20	22	7					
	21	20	19	23	19	23	3					
	21	20	19	22	20	24						
Total Students	62	62	58	67	59	69	10	387	--	--	--	377
Total Teachers	3	3	3	3	3	3	2	20				18
Classroom Avg	20.7	20.7	19.3	22.3	19.7	23.0	5	19				21

	K	1	2	3	4	5	Total	Current Change	YTD Change	Official 10/11 Enrollment	Class Size W/out SPED	
Harvey Oaks	20	17	23	22	25	17						
	19	15	22	21	24	20						
		17				20						
Total Students	39	49	45	43	49	57		282	--	--	--	282
Total Teachers	2	3	2	2	2	3		14.0				14
Classroom Avg	19.5	16.3	22.5	21.5	24.5	19.0		20				20

	K	1	2	3	4	5	SpEd Cluster Program	Total	Current Change	YTD Change	Official 10/11 Enrollment	Class Size W/out SPED
Hitchcock	15	16	12	15	15	27	9					
	13	17	14	13	14		10					
Total Students	28	33	26	28	29	27	19	190	--	--	--	171
Total Teachers	2	2	2	2	2	1	2	13.0				11
Classroom Avg	14.0	16.5	13.0	14.0	14.5	27.0	9.5	15				16

	K	1	2	3	4	5	SpEd Cluster Program	Total	Current Change	YTD Change	Official 10/11 Enrollment	Class Size W/out SPED
Holling Heights	20	22	19	18	18	22	1					
	25	20	19	22	19	21	5					
	22	20	21	19	20	21						
Total Students	67	62	59	59	57	64	6	374	--	--	--	368
Total Teachers	3	3	3	3	3	3	2	20.0				18
Classroom Avg	22.3	20.7	19.7	19.7	19.0	21.3	3.0	19				20

	K	1	2	3	4	5	M-K	M1-3	M4-5	Total	Current Change	YTD Change	Official 10/11 Enrollment	Class Size W/out SPED
Montclair	19	23	21	19	22	24	13	24	20					
	20	23	20	19	21	25	16	23	20					
							16	23	22					
								24	20					
								23						
								23						
Total Students	39	46	41	38	43	49	45	140	82	523	--	--	--	523
Total Teachers	2	2	2	2	2	2	3	6	4	25				25
Classroom Avg	19.5	23.0	20.5	19.0	21.5	24.5	15.0	23.3	20.5	21				21

	K	1	2	3	4	5	SpEd Cluster Program	Total	Current Change	YTD Change	Official 10/11 Enrollment	Class Size W/out SPED
Morton	21	21	20	18	22	24	7					
	17	13	19	17	21	24	7					
	21	12	14	17	20	24						
Total Students	59	46	53	52	63	72	14	359	--	--	--	345
Total Teachers	3	3	3	3	3	3	2.0	20				18.0
Classroom Avg	19.7	15.3	17.7	17.3	21.0	24.0	7.0	18				19

	K	1	2	3	4	5	Total	Current Change	YTD Change	Official 10/11 Enrollment	Class Size W/out SPED	
Neihardt	20	21	21	25	20	24						
	19	20	21	24	22	24						
	20	19	22	24	21	25						
	19	21	20	23	20	24						
		20			21							
Total Students	78	101	84	96	104	97		560	--	--	--	560
Total Teachers	4	5	4	4	5	4		26.0				26.0
Classroom Avg	19.5	20.2	21.0	24.0	20.8	24.3		22				22

	K	1	2	3	4	5	M-K	M1-3	M4-5	Total	Current Change	YTD Change	Official 10/11 Enrollment	Class Size W/out SPED
Norris	20	25	20	18	19	23	12	22	18					
	18	25	20	20	19	24	8	17	20					
								17						
Total Students	38	50	40	38	38	47	20	56	38	365	--	--	--	365
Total Teachers	2	2	2	2	2	2	2	3	2	19.0				19.0
Classroom Avg	19.0	25.0	20.0	19.0	19.0	23.5	10.0	18.7	19.0	19				19

	K	1	2	3	4	5	Total	Current Change	YTD Change	Official 10/11 Enrollment	Class Size W/out SPED	
Reagan	22	22	23	22	19	20						
	21	22	17	21	20	20						
	19	21	23	22	20	20						
	21	20	21	22	21	18						
	21	22	22	22	18							
	20		20									
Total Students	124	107	126	109	98	78		642	--	--	--	642
Total Teachers	6	5	6	5	5	4		31.0				31.0
Classroom Avg	20.7	21.4	21.0	21.8	20.0	19.5		21				21

K	1	2	3	4	5	SpEd Program	Total	Current Change	YTD Change	Official 10/11 Enrollment	
Reeder	20	23	23	25	22	15	9			114	
	20	21	22	25	21	19	9				
	20	19	22	25	25	24					
	20	19		26	15	23					
	19										
Total Students	99	82	67	101	83	81	18	531	--	--	513
Total Teachers	5	4	3	4	4	4	2	26.0			24.0
Classroom Avg	20.0	21.0	22.3	25.0	22.7	19.3	9.0	20			21

K	1	2	3	4	5	SpEd Program	Total	Current Change	YTD Change	Official 10/11 Enrollment	
Rockwell	17	19	19	25	20	26	8				
	18	18	20	26	18	25	10				
	18	18	20		19						
Total Students	53	55	59	51	57	51	18	344	--	--	326
Total Teachers	3	3	3	2	3	2	2	18.0			16.0
Classroom Avg	17.7	18.3	19.7	25.5	19.0	25.5	9.0	19			20

K	1	2	3	4	5	SpEd Cluster Program	Total	Current Change	YTD Change	Official 10/11 Enrollment	
Rohwer	21	21	25	21	19	20	9				
	20	20	18	19	21	21	8				
	22	19	24	20	19	20					
		16		21	20	20					
Total Students	63	76	67	81	79	81	17	464	--	--	447
Total Teachers	3	4	3	4	4	4	2	24.0			22
Classroom Avg	21.0	19.0	22.3	20.3	19.8	20.3	8.0	19			20

K	1	2	3	4	5	SpEd Cluster Program	Total	Current Change	YTD Change	Official 10/11 Enrollment	
Sandoz	17	18	18	20	20	25					
	18	18	18	20	20	24					
	17	16	17	19							
Total Students	52	52	53	59	40	49		305	--	--	305
Total Teachers	3	3	3	3	2	2		16			16
Classroom Avg	17.3	17.3	17.7	19.7	20.0	24.5		19			19

K	1	2	3	4	5	SpEd Cluster Program	Total	Current Change	YTD Change	Official 10/11 Enrollment	
Upchurch	22	22	21	23	21	21					
	22	22	20	23	21	22					
	21	22	22	23	19						
	20	22	22								
	20	22									
Total Students	105	110	85	69	61	43		473	--	--	473
Total Teachers	5	5	4	3	3	2		22			22
Classroom Avg	21.0	22.0	21.3	23.0	20.3	21.5		22			22

K	1	2	3	4	5	SpEd Cluster Prgm	Total	Current Change	YTD Change	Official 10/11 Enrollment	
Wheeler	20	20	22	20	21	24	8				
	20	17	19	21	19	16	6				
	16	16	21	18	23	26	7				
	19	20	22	20	23	23					
		18	23	21	24	22					
Total Students	75	91	107	100	110	111	21	615	--	--	594
Total Teachers	4	5	5	5	5	5	3	32			29
Classroom Avg	18.8	18.2	21.4	20.0	22.0	22.2	7.0	19			20

K	1	2	3	4	5	SpEd Cluster Prgm	Total	Current Change	YTD Change	Official 10/11 Enrollment	
Willowdale	20	19	21	23	23	22					
	20	19	21	23	23	22					
	20	18	21	22	22	23					
						23					
Total Students	60	56	63	68	68	90		405	--	--	405
Total Teachers	3	3	3	3	3	4		19.0			19
Classroom Avg	20.0	18.7	21.0	22.7	22.7	22.5		21			21

Elementary Totals Grade	K	1	2	3	4	5	M-1	M-2	M-3	M-4	M-5	SpEd Cluster Prgm	Total	Current Change	YTD Change	Official 10/11 Enrollment	
Students	1660	1749	1677	1711	1735	1690	70	62	64	66	54	162	10384	--	--	--	10222
Teachers	87	86	81	78	80	73	9			6		22	522				500.0
Classroom Avg	19.1	20.3	20.7	21.9	21.7	23.2						7.4	19.89				20.444

6	7	8	SpEd Cluster	Total	Current Change	YTD Change	Official 10/11 Enrollment	
Andersen MS	232	253	267	0	752	--	--	--
Beadle MS	342	270	307	28	919	--	--	--
Central MS	250	249	254	22	753	--	--	--
Kiewit MS	287	283	308	0	878	--	--	--
North MS	245	317	253	18	815	--	--	--
Russell MS	280	287	281	0	848	--	--	--
MS Alternative	0	7	16		23	--	--	--
Totals	1636	1666	1686	68	4988	--	--	--

North HS	South HS	West HS	Millard Learning Center	Totals	9	10	11	12	SpEd Cluster	Total	Current Change	YTD Change	Official 10/11 Enrollment
					613	618	591	573	20	2395	--	--	--
					503	500	478	506	28	1987	--	--	--
					595	557	512	518	34	2182	--	--	--
					0	0	44	89		133	--	--	--
					1711	1675	1625	1686	82	6697	--	--	--

Contracted SPED	40	--	--	--
Young Adult Program	52	--	--	--
Ombudsmen (Primary Enrollment)	10	--	--	--
<b>Total District Enrollment</b>	<b>22171</b>	--	--	--



**AGENDA SUMMARY SHEET**

**AGENDA ITEM:** Transportation Report

**MEETING DATE:** September 7, 2010

**DEPARTMENT:** General Administration

**TITLE & BRIEF DESCRIPTION:** Transportation Report – A report on the transportation services being provided in the district.

**ACTION DESIRED:** Approval  Discussion  Information Only

**BACKGROUND:**

The District provides a significant amount of student transportation each year. These services include services for certain qualifying elementary students (no charge), middle school students (partial parent pay), and high school students (full parent pay). The District waives/pays the fees for poverty students under its “poverty plan.”

The District also provides transportation to qualified students in the following programs: English Language Learner (ELL), special education, Middle School Alternative Program (MSAP), Horizon High School (formerly, Millard Learning Center), Career Academies, and pre-school special education.

The District’s general fund budget for transportation is \$ 2,184,351. Transportation services are provided via 73 buses/drivers leased through First Student, 37 vans owned/leased by the District, and 39 vans/cabs contracted through private vendors.

New this year is transportation for open enrollment students in the learning community. There are currently 108 open enrollment students being transported and the current cost estimate for such service is \$519,000 (i.e., \$4,805 per student per year). This amount is included in the budget noted above.

**OPTIONS AND ALTERNATIVES:** n/a

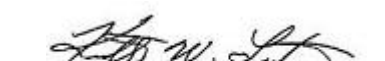
**RECOMMENDATION:** n/a

**STRATEGIC PLAN REFERENCE:** n/a

**IMPLICATIONS OF ADOPTION/REJECTION:** n/a

**TIMELINE:**

**RESPONSIBLE PERSON:** Ken Fossen, Associate Superintendent (General Administration)

**SUPERINTENDENT’S APPROVAL:** 

# Elementary Routes (No Charge)

Routes Per Day

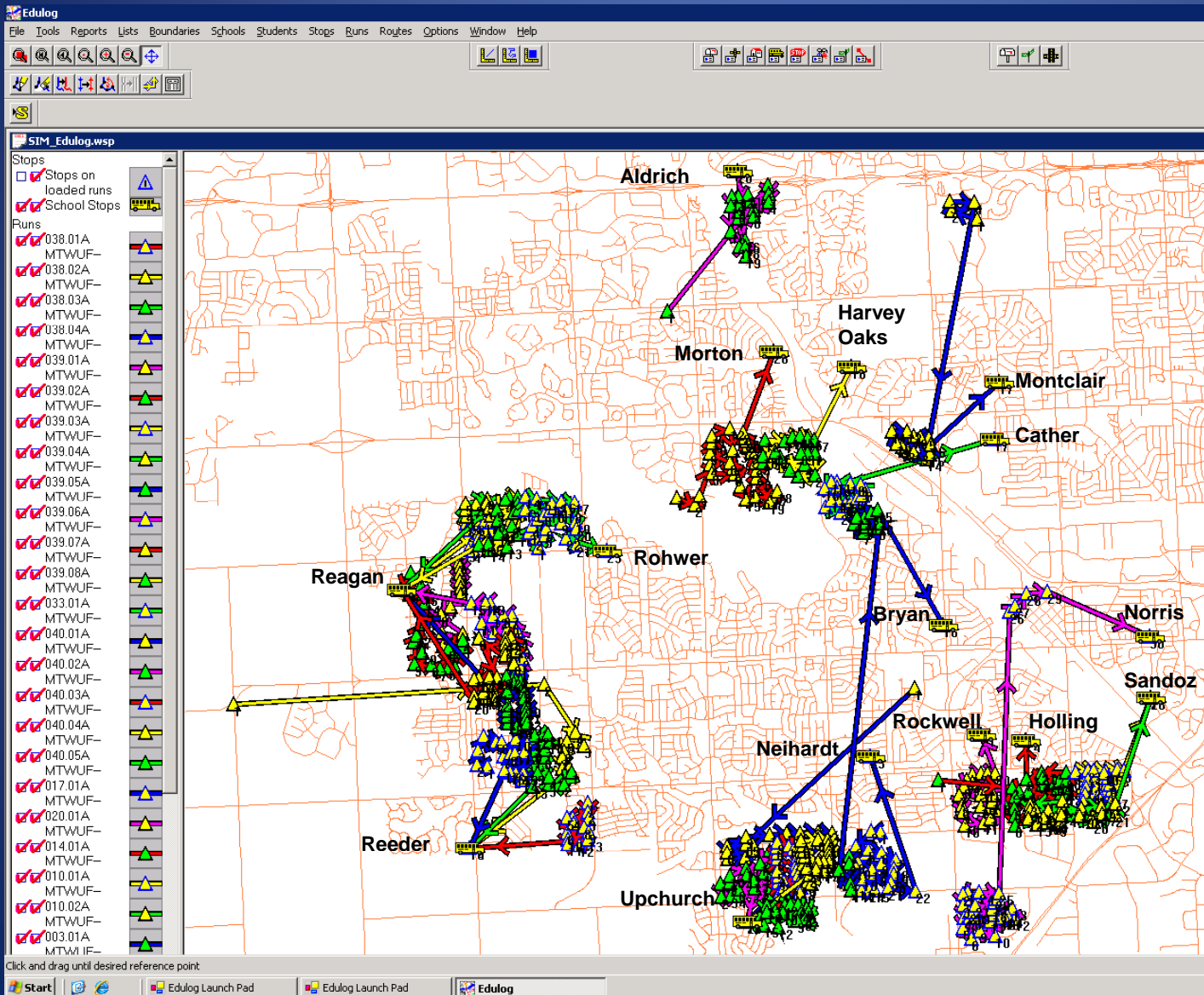
30

Miles Per Day

377

# Eligible for Transportation

2251



## Safety Criteria For Determining Eligibility For Elementary School Students

Housing areas under two miles must meet 3 of the 5 criteria listed below before transportation service is provided.

1. Posted speed of 45 mph or more.
2. Lack of sidewalks in critical areas.
3. The crossing of a U.S. highway or limited access highway with More than two (2) lanes of traffic.
4. Hazardous intersections which lack pedestrian crossing signs, markings, and control signals, curbing or unimpaired visual clearance.
5. Road conditions which incorporate limited walking space and heavy traffic volume during to and from school hours.

# Middle School Routes (Partial Pay)

Routes Per Day

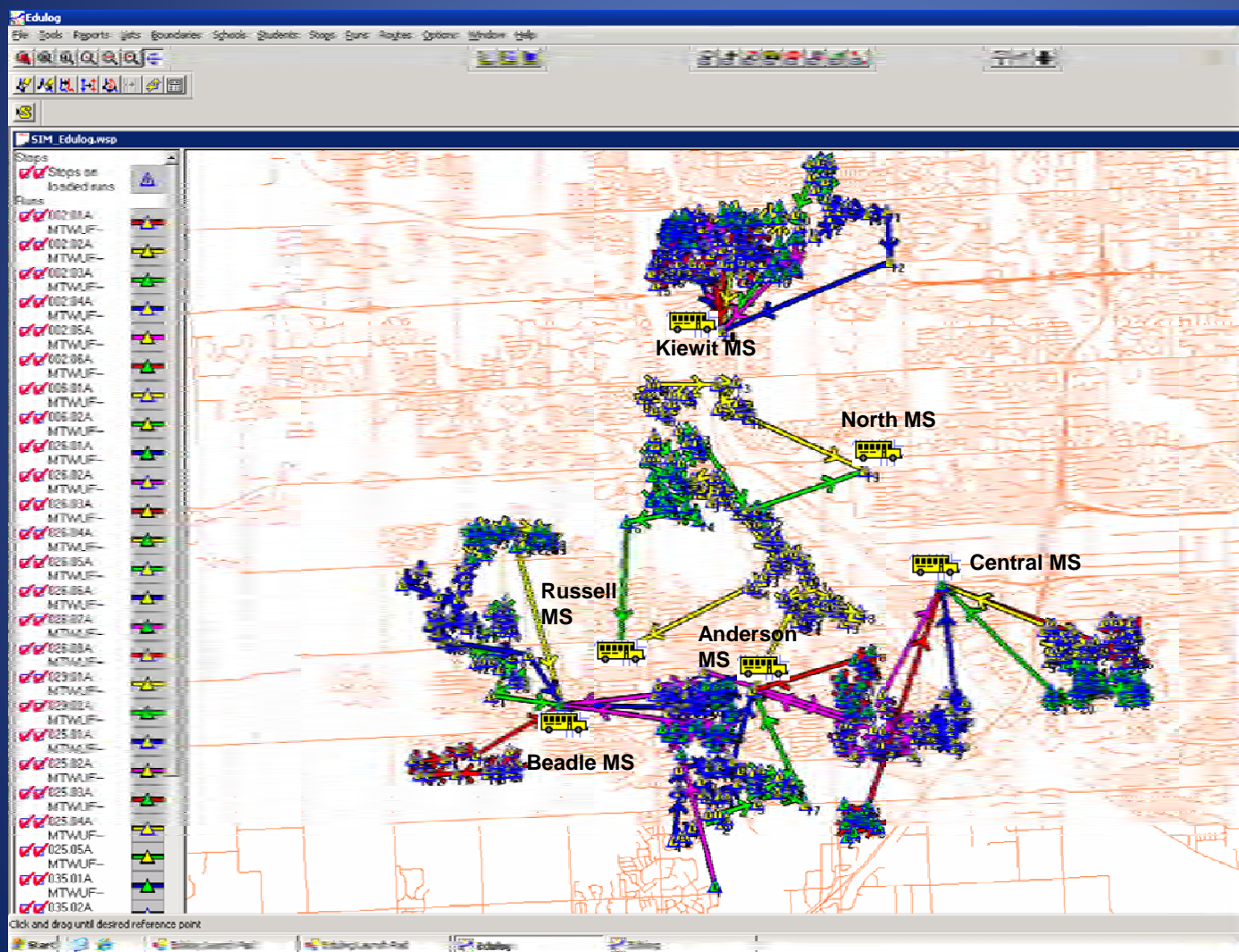
30

Miles Per Day

427

# Students Transported

967



## Safety Criteria For Determining Eligibility For Middle School Students

1. Students who live more than 2 miles from their assigned schools. Charges, which are determined annually by the District, are currently \$1.25 per trip or \$2.50 a day.
2. No transportation services for students living within 2 miles of their assigned schools, however, the parents of such student may, at their own expense, seek to contract for such services with First Student or any other transportation provider.



# High School Routes (Full Pay)

Routes Per Day

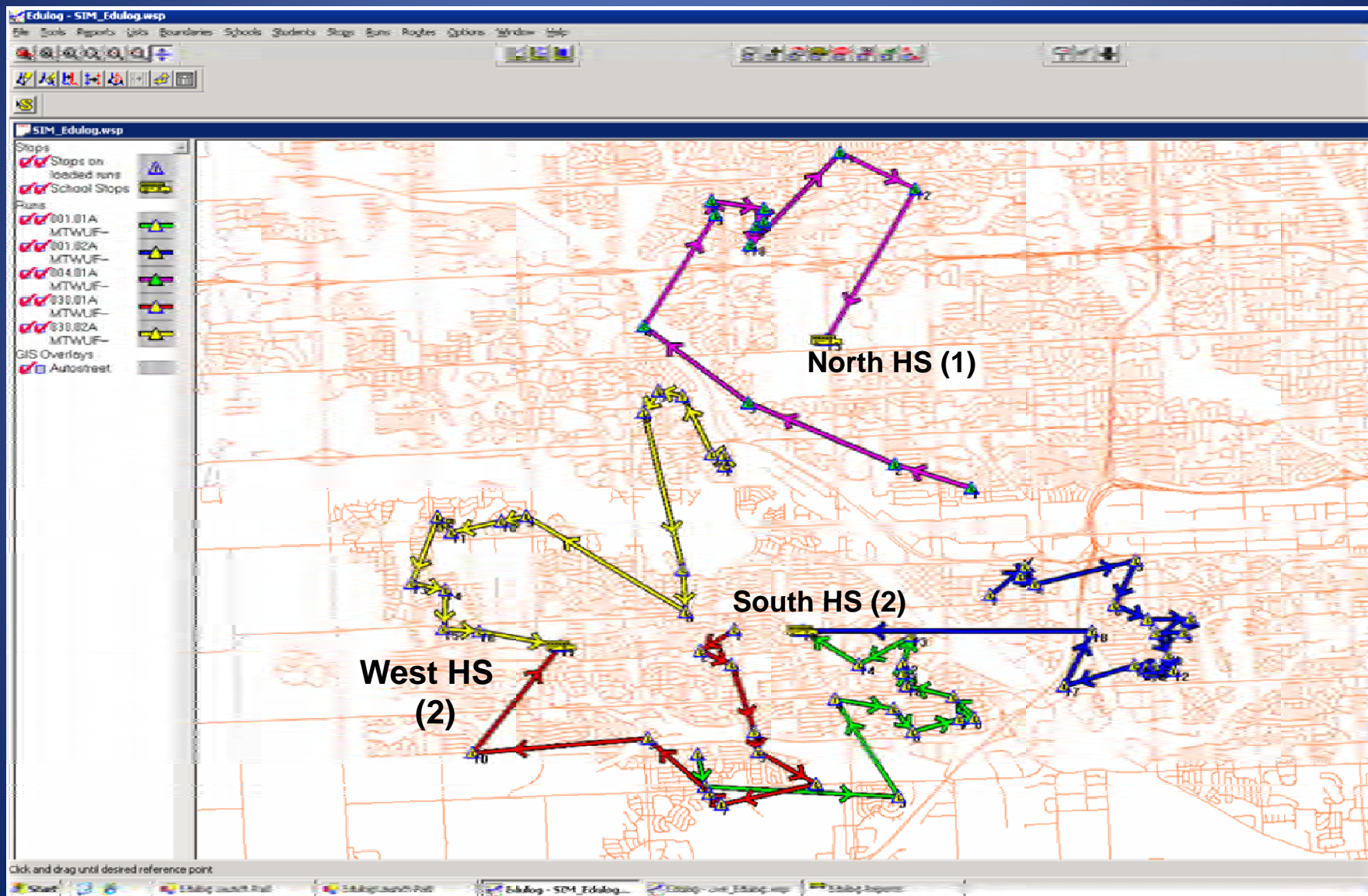
4

Miles Per Day

125

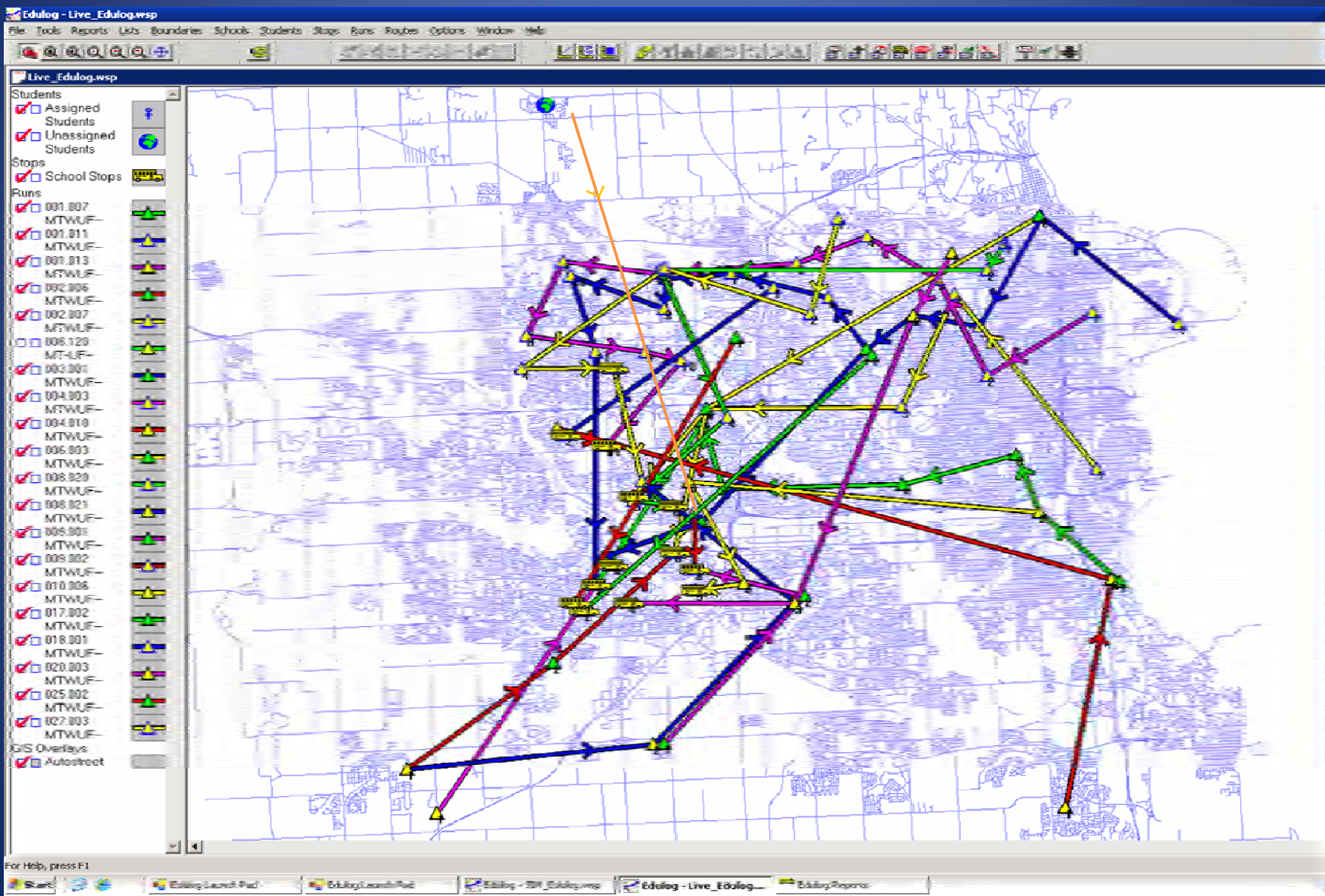
# Students Transported

125



# Open Enrollment Routes

Routes Per Day	Miles Per Day	# Students Transported
20	654	108





# ELL Routes

120

Routes Per Day

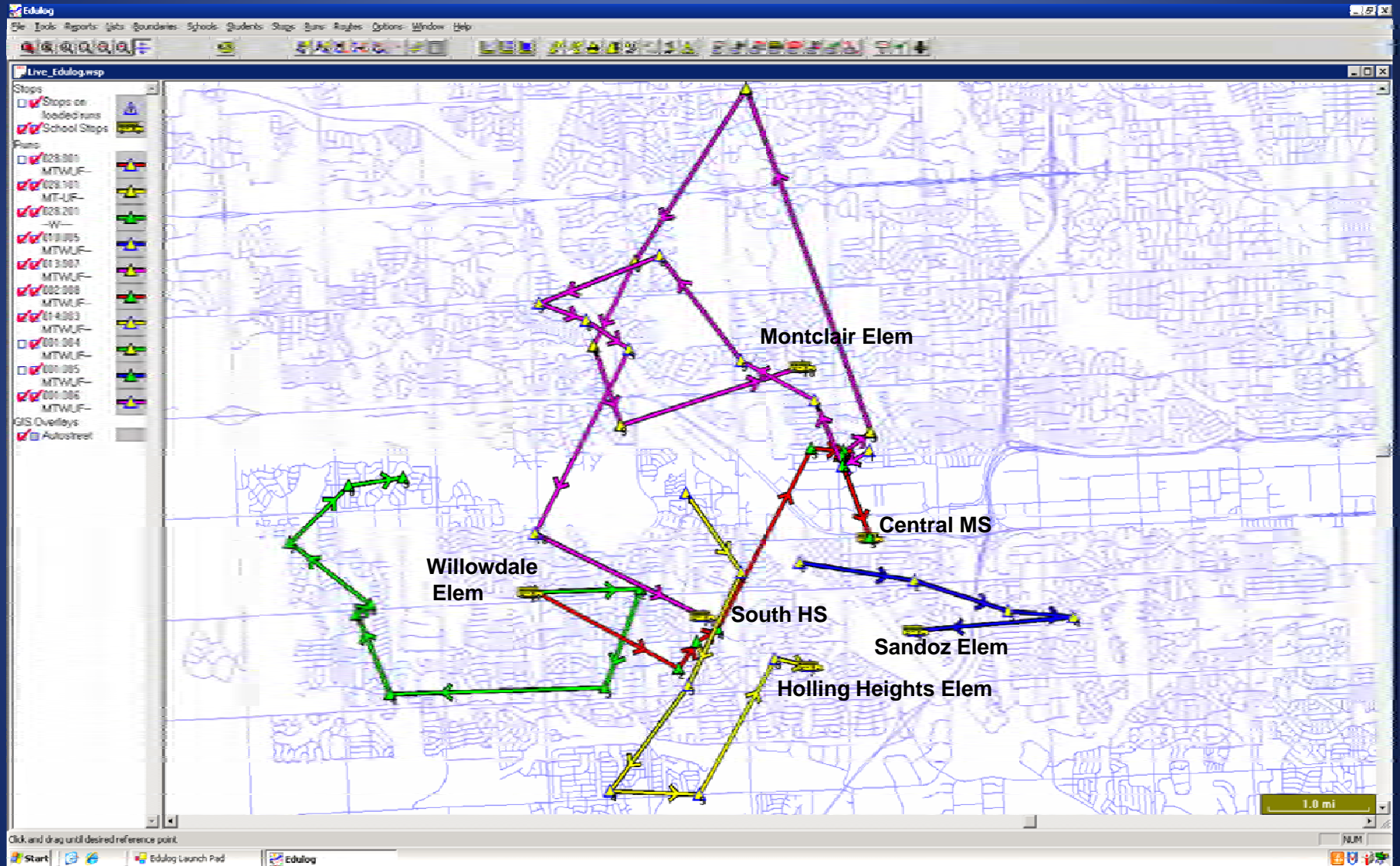
6

Miles Per Day

125

# Students Transported

140



# MSAP Routes

Routes Per Day

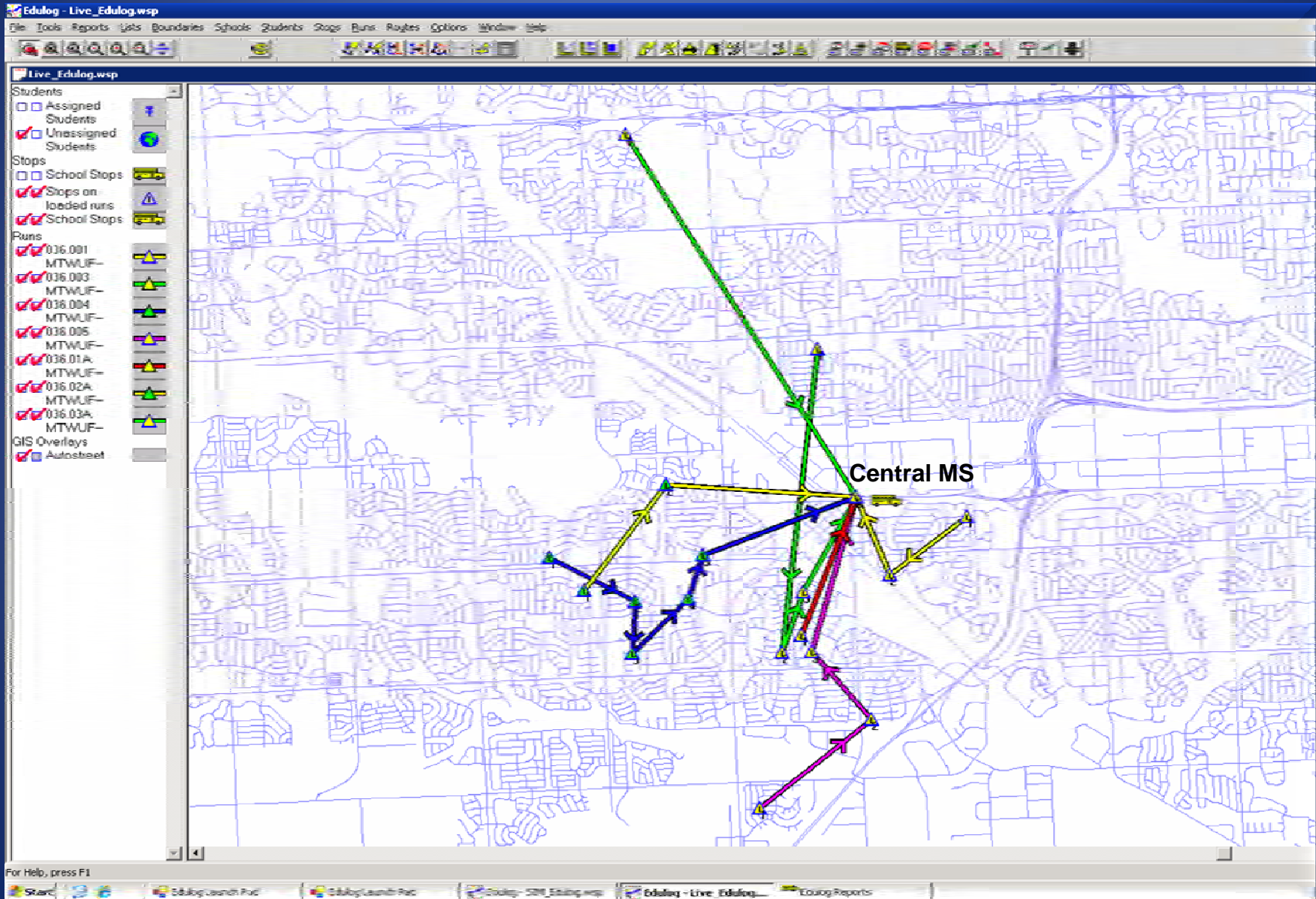
4

Miles Per Day

43

# Students Transported

18





# Horizon High School Routes

122

Routes Per Day

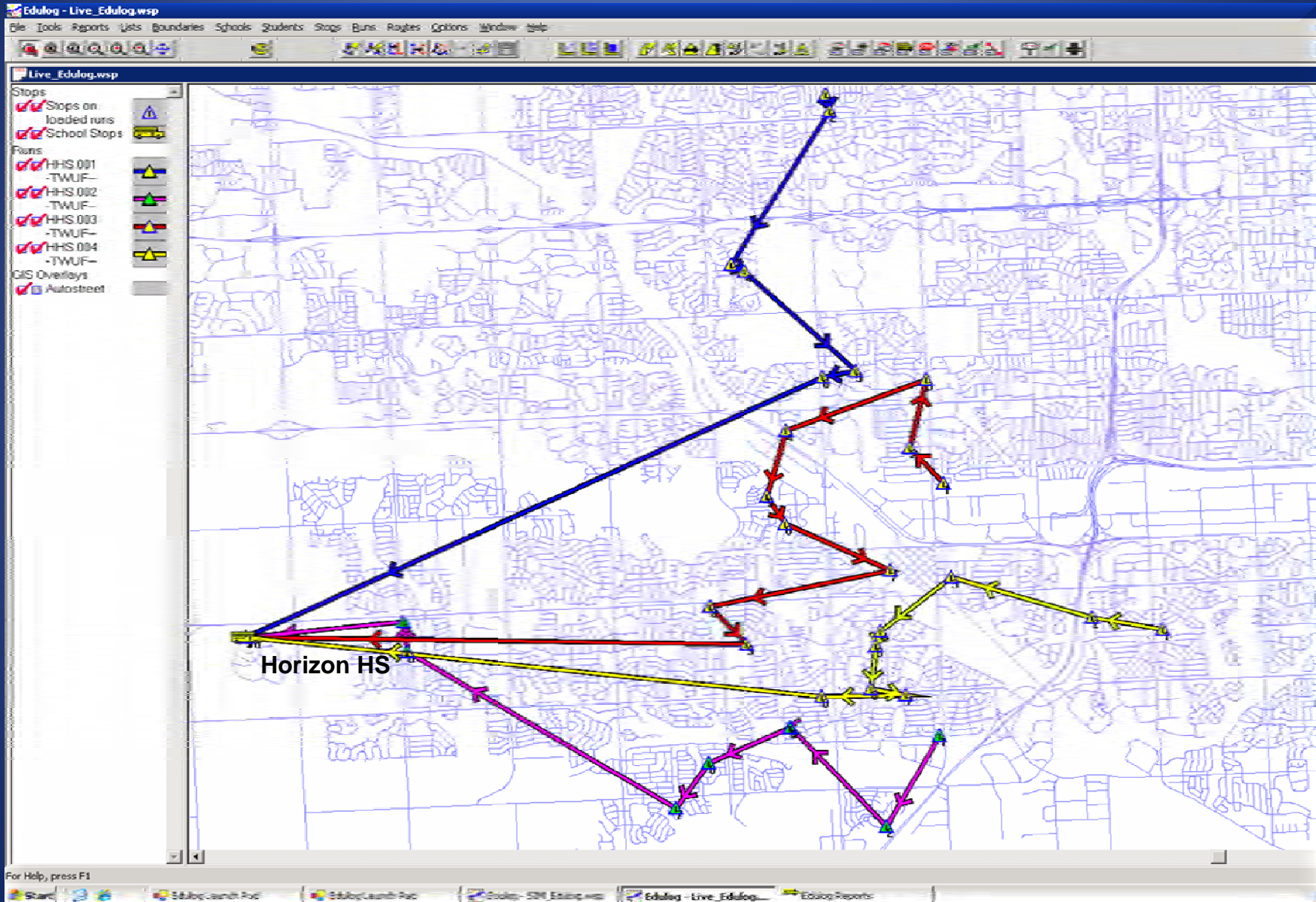
4

Miles Per Day

123

# Students Transported

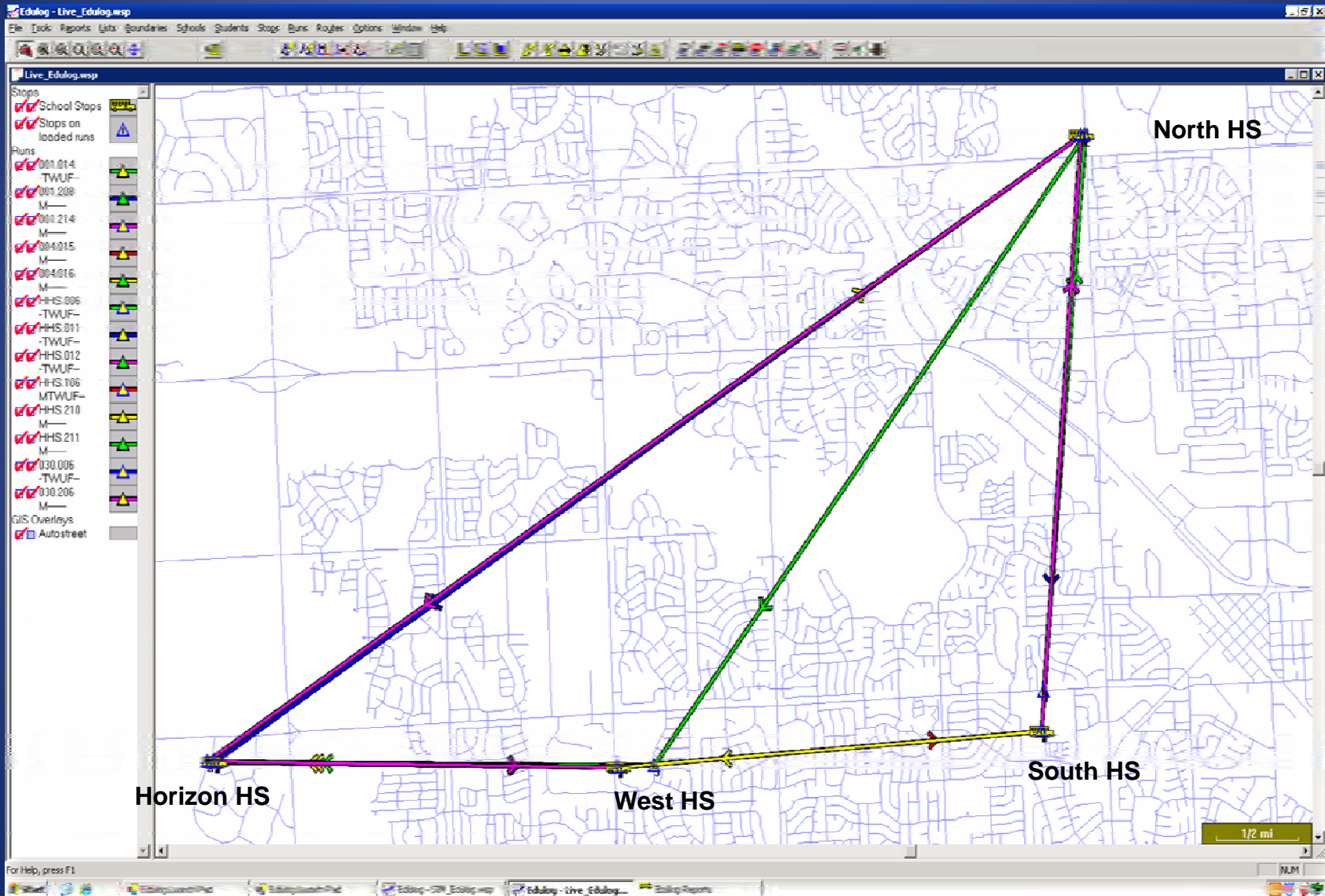
35



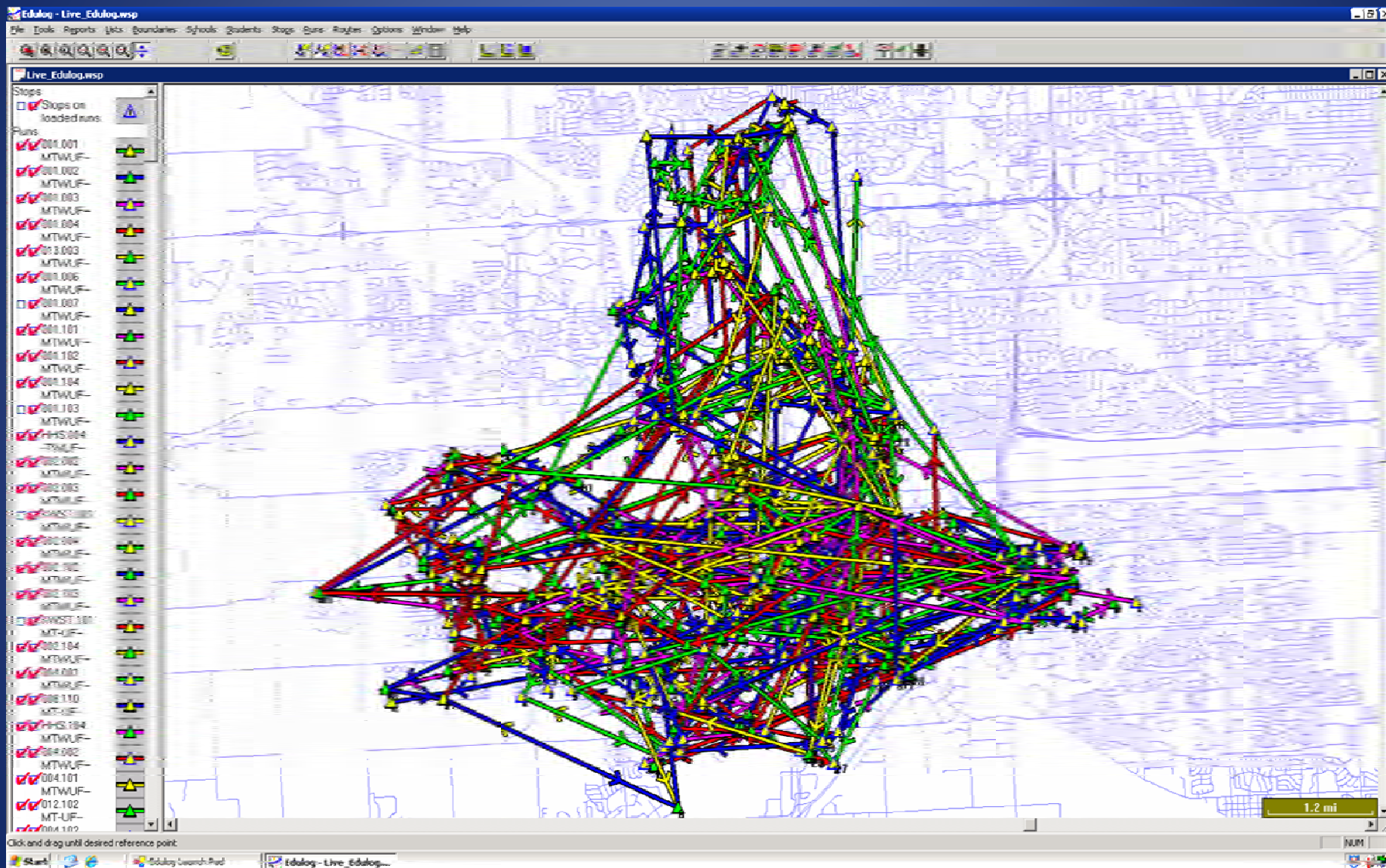


# Career Academy Routes

Routes Per Day	Miles Per Day	# Students Transported
6	154	90



# 2010-11 SPED Routes (Schematic)





# Preschool Student Routes (SPED)

Routes Per Day

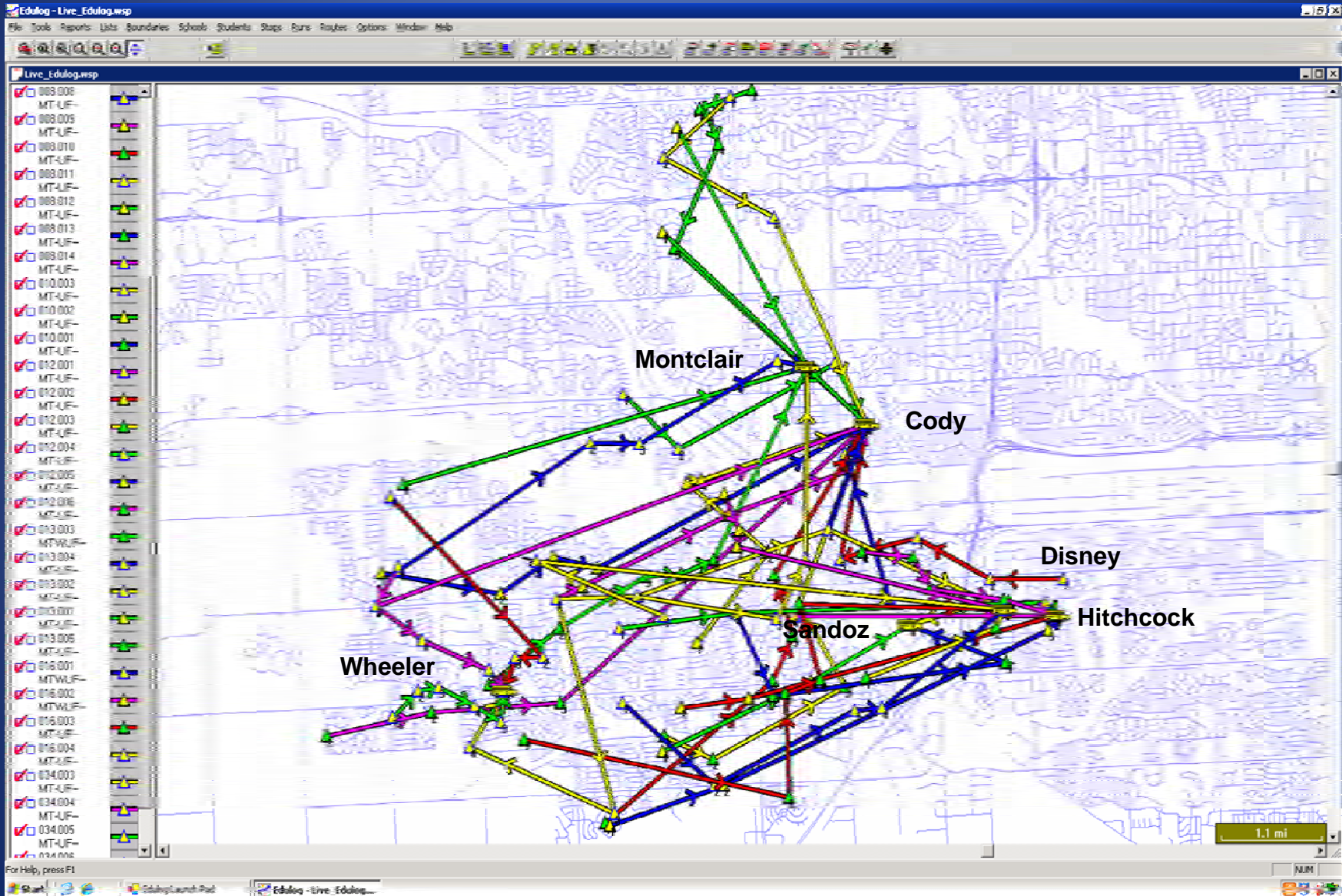
37

Miles Per Day

434

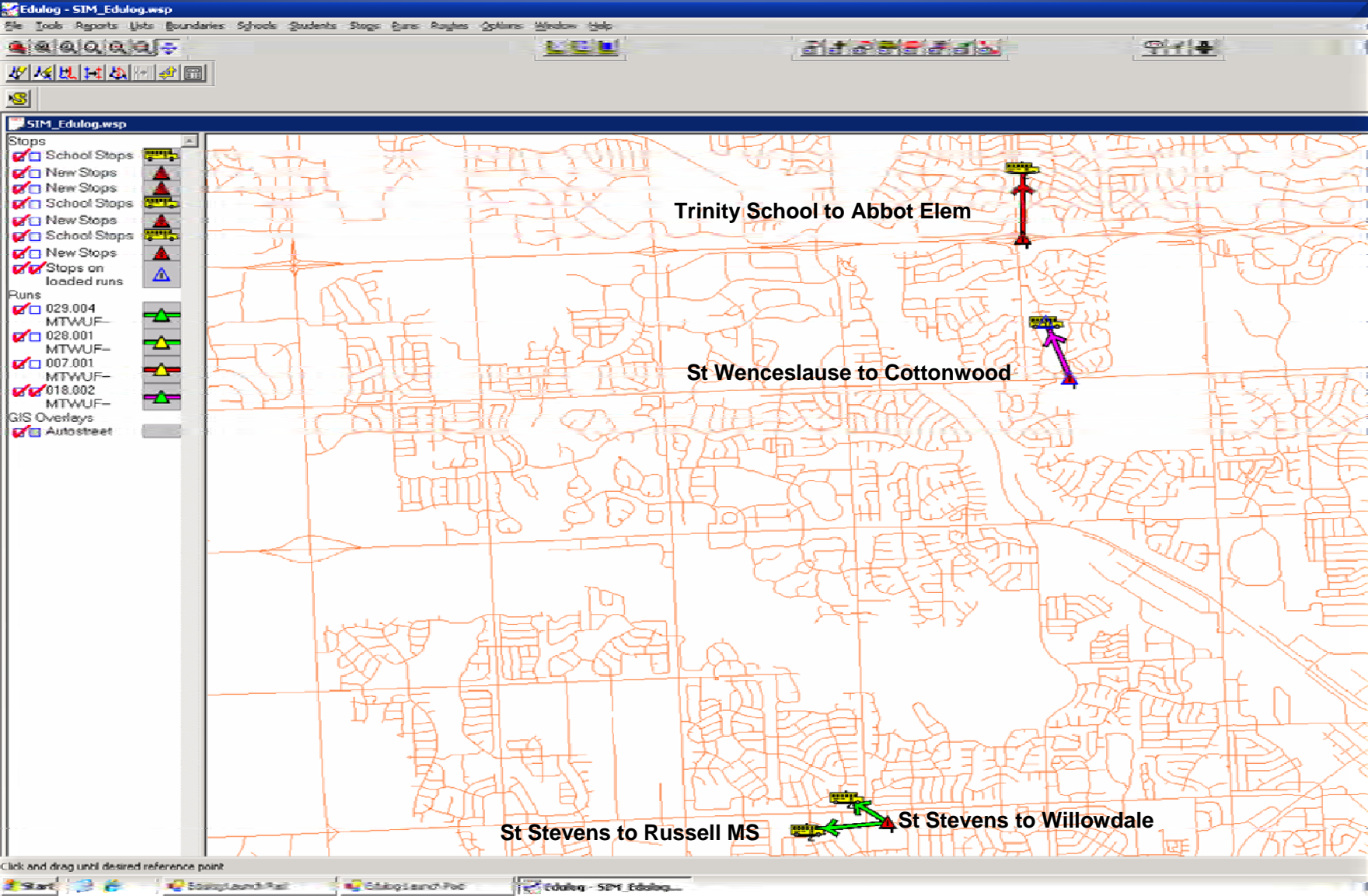
# Students Transported

142



# Parochial Schools (SPED)

Routes Per Day	Miles Per Day	# Students Transported
4	22	50



**Support Services – Transportation****Students – Regular Education****3811**

The District shall provide student transportation services as required by law and may, at its discretion, provide additional student transportation services that are not required by law. The District may charge for such additional transportation services.

Private vendors may be contracted to provide all or a portion of the District’s student transportation services.

All transportation services provided under this policy shall comply with state and federal law.

Legal References: *Neb. Rev. Stat.* § 79-601 through §79-613  
92 NAC 91  
92 NAC 92

Related Policies & Rules: 3811.1

Policy Adopted: April 23, 2007

Millard Public Schools  
Omaha, NE

## Support Services – Transportation

### Students – Regular Education

3811.1

- I. The District shall provide the following student transportation services to students at the elementary school level:
  - A. Any elementary students who live more than two miles from their assigned schools shall be provided transportation services to such schools. There shall be no charge for such services.
  - B. Any elementary student who lives in a subdivision that was assigned to a school other than its neighborhood school shall be provided transportation services to his/her assigned school provided that such services were approved by the Board of Education at the time of such reassignment.
  - C. Any student who, in his/her walks to school, encounters at least three of the following five circumstances shall be provided transportation services at no charge:
    1. The student must cross a road with a speed limit of 45 mph or greater.
    2. The student must, due to lack of sidewalks, walk in a nonresidential street (or the unimproved area immediately adjacent thereto).
    3. The student must cross a four-lane (or more) state or federal highway or interstate highway.
    4. The student must cross one or more non-residential intersections that (a) do not have pedestrian crossing signs, markings, or signals, or (b) do not have sufficient visual range for safe pedestrian crossing.
    5. The student must traverse consistently high-volume roadways where temporary road conditions present limited walking space.
- II. The District shall provide the following student transportation services to students at the Middle School level:
  - A. The District shall arrange transportation services for all middle school students who live more than two miles from their assigned schools. There shall be a charge for such transportation. The charge for such services shall be determined annually by the District. The charge may (but need not be) sufficient to recover the full cost for such services.
  - B. No transportation services shall be arranged by the District for students living within two miles of their assigned schools, however, the parents of such student may, at their expense, seek to contract for such services with the District's contracted transportation service provider (or any other transportation provider).
  - C. Any middle school student who lives in a subdivision that was reassigned to another middle school further from the subdivision than its original school shall be provided transportation services to his/her assigned school provided that such services were approved by the Board of Education at the time of such reassignment
- III. The District shall provide the following student transportation services to students at the high school level:
  - A. The District shall provide transportation services free of charge to any student who lives more than four miles from his/her assigned school. However, the District may, at its sole discretion, elect to provide mileage reimbursement to any or all such qualifying students in lieu of transportation. The mileage reimbursement rate for such shall be as prescribed by state law.

- B. B. No transportation services shall be provided by the District for students living within four miles of their assigned high schools, however, the parents of such students may, at their expense, seek to contract for such services with the District's contracted transportation service provider (or any other transportation provider).
- IV. Unless otherwise required by law, the District shall not provide transportation services to in-district transfer students (i.e., those students who, at their request, are permitted to attend a school other than the school to which they would have been assigned based upon the location of their residence).

Related Policies & Rules: 3811

Policy Adopted: April 23, 2007

Millard Public Schools  
Omaha NE

<b>MILLARD PUBLIC SCHOOLS</b>
-------------------------------

**FRPLS  
(FREE OR REDUCED PRICE LUNCH STUDENTS)  
TRANSPORTATION  
PROCEDURES**

- 1.0 State Laws:
- 1.1 Nebraska statutes related to Student Fees (Neb. Rev. Stat. §79-2,127) permit school districts to charge for transportation services for the following:
- 1.1.1 Neb. Rev. Stat. §241 (option enrollment students)
- 1.1.2 Neb. Rev. Stat. §605 (tuition students)
- 1.1.3 Neb. Rev. Stat. §611 (students living within 4 miles of school)
- 2.0 Millard Public Schools:
- 2.1 Although the Millard Public Schools could charge for all transportation services noted above, the decision has been made to NOT charge (or to have reduced charges) for certain services.
- 2.1.1 Elementary Schools (See Rule 3811.1 Section I): The District has neighborhood elementary schools that are reasonably close to the residences of most elementary students. As a result, the District provides free transportation services only to students who live more than two miles from their assigned school and for some other circumstances noted in Rule 3811.1.
- 2.1.2 Middle Schools (See Rule 3811.1 Section II): The District has a “partial-parent pay” busing program for middle school students living more than two miles from their assigned school. Under this arrangement, the District pays for about 60% of the cost. Parents pay for the remaining amount (~40%). Bus tickets may be purchased by students in the principal’s office at each of the middle schools.
- 2.1.3 High Schools (See Rule 3811.1 Section III): The District does not provide regular transportation for any students attending the high schools. However, First Student Transportation (i.e., the contractor which provides bus services to the District) does contract directly with parents who are willing to pay for transportation services for their high school students. The parents make payment directly to First Student.
- 2.1.4 Other Transportation Policies: There are other District policies and rules that address transportation services (e.g., ELL, MSAP, SpEd, Homeless, etc.) that are not mentioned above. Please refer to the Support Services 3800 Series of the District’s policies and rules for information on these transportation services.
- 3.0 Transportation for Qualifying FRPLS:
- 3.1 Services: Transportation services (without charge) may be provided to secondary students (grades 6-12) subject to the following qualifications and limitations:



- 3.1.1 Middle School: The District shall pay for the bus tickets for middle school students (1) who qualify for free or reduced priced meals and (2) whose family is unable to provide transportation for such student to attend school on a regular basis.
  - 3.1.1.1 Pick Up Points: The Transportation Department will arrange pickup locations for students who qualify.
  - 3.1.1.2 Limitation: All new pickup locations established under this section shall be at least one mile from the school. No special arrangements shall be made for alternate pickup and return locations (i.e., transportation to and from locations other than the student's residence).
- 3.1.2 High School: The District shall pay to First Student (contracted bus company) the cost for high school students (1) who qualify for free or reduced priced meals and (2) whose family is unable to provide transportation for such student to attend school on a regular basis.
  - 3.1.2.1 Pick Up Points: First Student will arrange pickup locations for students who qualify.
  - 3.1.2.2 Limitation: All new pickup locations established under this section shall be at least one mile from the school. No special arrangements shall be made for alternate pickup and return locations (i.e., transportation to and from locations other than the student's residence).
- 3.2 Documentation: In order to document a student's qualification for transportation services, the appropriate principal (or designee) shall secure documentation of the student's FRPL status by ONE of the following methods:
  - 3.2.1.1 Through Food Service: If the parent (in the student's application for free or reduced price lunches) checked the appropriate box permitting the sharing of information for other purposes, confirm the FRPLS status directly through the food service application approval list. [Note: Students who qualify for free or reduced price meals during one school year are automatically qualified for the first thirty (30) calendar days of the following school year.]
  - 3.2.1.2 Outside of Food Service: If the parent did NOT check the appropriate box noted immediately above, have the parent (or the student if 18 years of age or older) complete Form A under the Student Fees information found on the District's Intranet (i.e., Millard Intranet – Business Office – Documents – Student Fees). Additionally, the parent will need to complete Form B, C, D, or E (choose the ONE that is appropriate). These forms can be found at the same site on the District's Intranet.
- 3.3 Arrangements: The appropriate building principal (or designee) shall arrange for FRPLS transportation as follows:
  - 3.3.1 Send an email to the Associate Superintendent for General Administration requesting approval for such services. Copy the email request for approval to the following:

- 3.3.1.1 Kim Carlson (Transportation Manager)
- 3.3.1.2 Bridget Boardman (District Accountant)
- 3.3.2 The above email must contain the following information:
  - 3.3.2.1 The student's name and school
  - 3.3.2.2 A statement that the student qualifies for free or reduced price meals
  - 3.3.2.3 A statement that the student's parents (or guardians) are unable to provide the transportation necessary for the student to attend school on a regular basis.
  - 3.3.2.4 The parent's name, address (where student lives), and phone number
  - 3.3.2.5 The date the services are requested to commence
- 3.3.3 Approval will be sent via email "Reply to All" by the Associate Superintendent for General Administration.
- 3.3.4 When arrangements have been made, the Transportation Manager will "Reply to All" with the relevant information.
- 3.3.5 The appropriate Building Principal (or designee) will be responsible for communicating the approval (and related information) to the student(s) and parent(s).
- 3.4 Payments: The District will pay for approved FRPL student transportation as follows:
  - 3.4.1 Middle Schools: The buildings will pay for the bus tickets for the FRPL students and (on a monthly basis) submit an itemized request for reimbursement to the business office. Such request shall be made on the FRPLS Reimbursement Request form. (Note: This form is also used to request reimbursement for student fees for FRPLS.)
  - 3.4.2 High Schools: The billing statement from First Student will be sent to the principal (or designee) for review and approval. When approved, the billing statement shall be signed and forwarded to the business office for payment directly to First Student.

**Support Services – Transportation****Students – Homeless****3813**

The District shall provide transportation services to homeless students who qualify for such services under state and/or federal law.

Legal References: Neb. Rev. Stat. §79-215  
42 USC §11432  
92 NAC 91  
92 NAC 92

Related Policies & Rules:

Policy Adopted: April 23, 2007

Millard Public Schools  
Omaha, NE

**Support Services – Transportation****Students – ELL & MSAP****3814**

The District shall provide transportation services to students enrolled in the English Language Learner (ELL) program or Middle School Alternative Program (MSAP) if such students are assigned to a program that is in a school other than the school to which they would be assigned based upon the location of their residence (i.e., “neighborhood school”).

The transportation for such students shall be from their neighborhood schools to their assigned schools unless compelling reasons exist for the administration to arrange otherwise. Such determination shall be made by and at the sole discretion of the Superintendent (or designee).

Related Policies & Rules:

Policy Adopted: April 23, 2007

Millard Public Schools  
Omaha, NE

## Nebraska

### Chapter 79. Schools

#### Article 6. School Transportation

*Current through 2009 First Special Legislative Session*

#### **§ 79-611. Students; transportation; transportation allowance; when authorized; limitations; board; authorize service**

(1) The school board of any school district shall provide free transportation, partially provide free transportation, or pay an allowance for transportation in lieu of free transportation as follows:

(a) When a student attends an elementary school in his or her own district and lives more than four miles from the public schoolhouse in such district as measured by the shortest route that must actually and necessarily be traveled by motor vehicle to reach the student's residence;

(b) When a student is required to attend an elementary school outside of his or her own district and lives more than four miles from such elementary school as measured by the shortest route that must actually and necessarily be traveled by motor vehicle to reach the student's residence;

(c) When a student attends a secondary school in his or her own Class II or Class III school district and lives more than four miles from the public schoolhouse as measured by the shortest route that must actually and necessarily be traveled by motor vehicle to reach the student's residence. This subdivision does not apply when one or more Class I school districts merge with a Class VI school district to form a new Class II or III school district on or after January 1, 1997; and

(d) When a student, other than a student in grades ten through twelve in a Class V district, attends an elementary or junior high school in his or her own Class V district and lives more than four miles from the public schoolhouse in such district as measured by the shortest route that must actually and necessarily be traveled by motor vehicle to reach the student's residence.

(2)(a) The school board of any school district that is a member of a learning community shall provide free transportation for a student who resides in such learning community and attends school in such school district if (i) the student is transferring pursuant to the open enrollment provisions of section 79-2110, qualifies for free or reduced-price lunches, and lives more than one mile from the school to which he or she transfers, (ii) the student is transferring pursuant to such open enrollment provisions, is a student who contributes to the

socioeconomic diversity of enrollment at the school building he or she attends, and lives more than one mile from the school to which he or she transfers, (iii) the student is attending a focus school or program and lives more than one mile from the school building housing the focus school or program, or (iv) the student is attending a magnet school or program and lives more than one mile from the magnet school or the school housing the magnet program.

(b) For purposes of this subsection, student who contributes to the socioeconomic diversity of enrollment at the school building he or she attends has the definition found in section 79-2110. This subsection does not prohibit a school district that is a member of a learning community from providing transportation to any intradistrict student.

(3) The transportation allowance which may be paid to the parent, custodial parent, or guardian of students qualifying for free transportation pursuant to subsection (1) or (2) of this section shall equal two hundred eighty-five percent of the mileage rate provided in section 81-1176, multiplied by each mile actually and necessarily traveled, on each day of attendance, beyond which the one-way distance from the residence of the student to the schoolhouse exceeds three miles.

(4) Whenever students from more than one family travel to school in the same vehicle, the transportation allowance prescribed in subsection (3) of this section shall be payable as follows:

(a) To the parent, custodial parent, or guardian providing transportation for students from other families, one hundred percent of the amount prescribed in subsection (3) of this section for the transportation of students of such parent's, custodial parent's, or guardian's own family and an additional five percent for students of each other family not to exceed a maximum of one hundred twenty-five percent of the amount determined pursuant to subsection (3) of this section; and

(b) To the parent, custodial parent, or guardian not providing transportation for students of other families, two hundred eighty-five percent of the mileage rate provided in section 81-1176 multiplied by each mile actually and necessarily traveled, on each day of attendance, from the residence of the student to the pick-up point at which students transfer to the vehicle of a parent, custodial parent, or guardian described in subdivision (a) of this subsection.

(5) When a student who qualifies under the mileage requirements of subsection (1) of this section lives more than three miles from the location where the student must be picked up and dropped off in order to access school-provided free transportation, as measured by the

shortest route that must actually and necessarily be traveled by motor vehicle between his or her residence and such location, such school-provided transportation shall be deemed partially provided free transportation. School districts partially providing free transportation shall pay an allowance to the student's parent or guardian equal to two hundred eighty-five percent of the mileage rate provided in section 81-1176 multiplied by each mile actually and necessarily traveled, on each day of attendance, beyond which the one-way distance from the residence of the student to the location where the student must be picked up and dropped off exceeds three miles.

(6) The board may authorize school-provided transportation to any student who does not qualify under the mileage requirements of subsection (1) of this section and may charge a fee to the parent or guardian of the student for such service. An affiliated high school district may provide free transportation or pay the allowance described in this section for high school students residing in an affiliated Class I district. No transportation payments shall be made to a family for mileage not actually traveled by such family. The number of days the student has attended school shall be reported monthly by the teacher to the board of such public school district.

(7) No more than one allowance shall be made to a family irrespective of the number of students in a family being transported to school. If a family resides in a Class I district which is part of a Class VI district and has students enrolled in any of the grades offered by the Class I district and in any of the non-high-school grades offered by the Class VI district, such family shall receive not more than one allowance for the distance actually traveled when both districts are on the same direct travel route with one district being located a greater distance from the residence than the other. In such cases, the travel allowance shall be prorated among the school districts involved.

(8) No student shall be exempt from school attendance on account of distance from the public schoolhouse.

**History.** Laws 1927, c. 84, § 1, p. 251; Laws 1929, c. 92, § 1, p. 348; C.S.1929, § 79-1902; Laws 1931, c. 149, § 1, p. 405; Laws 1941, c. 163, § 1, p. 650; C.S.Supp.,1941, § 79-1902; R.S.1943, § 79-1907; Laws 1949, c. 256, § 128, p. 735; Laws 1951, c. 276, § 6, p. 930; Laws 1955, c. 315, § 9, p. 979; Laws 1963, c. 483, § 1, p. 1553; Laws 1969, c. 717, § 1, p. 2743; Laws 1969, c. 718, § 1, p. 2744; Laws 1969, c. 719, § 1, p. 2746; Laws 1976, LB 852, § 1; Laws 1977, LB 117, § 1; Laws 1977, LB 33, § 10; Laws 1979, LB 425, § 1; Laws 1980, LB 867, § 2; Laws 1981, LB 204, § 156; Laws 1981, LB 316, § 3; Laws 1986, LB 419, § 1; Laws 1987, LB 200, § 1; Laws 1990, LB 259, § 22; Laws 1990, LB 1059, § 38; Laws 1993, LB 348, § 21; Laws 1994, LB 1311, § 1; R.S.1943, (1994), § 79-490; Laws 1996, LB 900, § 372; Laws 1997, LB 710, § 4; Laws 1997, LB 806, § 28; Laws 1999, LB 272, § 84; Laws 2003, LB 394, § 7; Laws 2005, LB 126,

§ 42; Laws 2006, LB 1024, § 56; Referendum 2006, No. 422; Laws 2007, LB641, § 10; Laws 2008, LB1154, § 8; Laws 2009, LB549, § 25. August 30, 2009

**AGENDA SUMMARY SHEET**

**AGENDA ITEM:** State Reading Assessment Results 2009-2010

**Meeting Date:** September 7, 2010

**Department:** Educational Services: Assessment, Research, and Evaluation

**Title and Brief Description:** Embargoed results of the 2010 State Reading Assessment. This data was embargoed until the August 25, 2010. Detailed demographic data and AYP information will be released in the State of the Schools Report on October 1, 2010.

**Action Desired:** Approval \_\_\_ Discussion \_\_\_ Information Only \_\_X\_\_

**Background:** Students in grades 3, 4, 5, 6, 7, 8, and 11 are required to participate in state reading testing each spring as a requirement for the Nebraska Department of Education and for federal No Child Left Behind. This is the first year for the state-wide Reading Assessment.

This report contains:

- Grade Level by Building Results
- Grade Level Indicator Results
- Comparison of Grade Level Percentage Below Proficiency for Learning Community Member Districts

**Options/Alternatives Considered:** N/A

**Recommendations:** Use data immediately to help determine effectiveness of district and building programs and student achievement.

**Strategic Plan Reference:** Supports the mission of the district.

**Implications of Adoption/Rejection:** N/A

**Timeline:** N/A

**Responsible Persons:** Mark Feldhausen and Tami Williams

**Superintendent's Signature:** \_\_\_\_\_



**NEBRASKA DEPARTMENT OF EDUCATION  
NEBRASKA STATE ACCOUNTABILITY (NeSA)  
DISTRICT REPORT OF SCHOOL PERFORMANCE  
SPRING 2010**

**GRADE 3**

DISTRICT: MILLARD PUBLIC SCHOOLS (28-0017-000)

PAGE: 1 OF 2

Performance Level Ranges			Reading				
			Average Scale Score	Total Number of Students*	% Below Standards	% Meets Standards	% Exceeds Standards
Reading							
Exceeds Standards	135 and above						
Meets Standards	085-134						
Below Standards	084 and below						
STATE SUMMARY			101	21,564	33	47	20
DISTRICT SUMMARY			121	1,739	12	51	37
<b>BRYAN ELEMENTARY SCHOOL (28-0017-003)</b>			102	64	31	50	19
<b>GRACE ABBOTT ELEM SCHOOL (28-0017-007)</b>			124	70	9	50	41
<b>CODY ELEMENTARY SCHOOL (28-0017-008)</b>			103	41	32	46	22
<b>NORRIS ELEMENTARY SCHOOL (28-0017-009)</b>			126	58	9	45	47
<b>SANDOZ ELEMENTARY SCHOOL (28-0017-010)</b>			106	41	24	51	24
<b>WILLA CATHER ELEMENTARY SCHOOL (28-0017-011)</b>			137	76	5	37	58
<b>HITCHCOCK ELEMENTARY SCHOOL (28-0017-012)</b>			138	27	7	33	59
<b>MONTCLAIR ELEMENTARY SCHOOL (28-0017-013)</b>			111	89	22	48	29
<b>HOLLING HEIGHTS ELEM SCHOOL (28-0017-014)</b>			115	62	16	58	26
<b>J STERLING MORTON ELEM SCHOOL (28-0017-015)</b>			119	63	6	60	33
<b>WALT DISNEY ELEMENTARY SCHOOL (28-0017-016)</b>			126	42	7	52	40
<b>NEIHARDT ELEMENTARY SCHOOL (28-0017-017)</b>			123	106	11	52	37
<b>COTTONWOOD ELEMENTARY SCHOOL (28-0017-018)</b>			130	51	6	51	43
<b>HARVEY OAKS ELEMENTARY SCHOOL (28-0017-019)</b>			127	53	11	45	43

\*Includes students tested plus zero scores for **INV** = Invalid, **OTH** = Other, **PAR** = Parent Refusal, and **SAE** = Student Absent for the Entire Testing Window





**NEBRASKA DEPARTMENT OF EDUCATION  
NEBRASKA STATE ACCOUNTABILITY (NeSA)  
DISTRICT REPORT OF SCHOOL PERFORMANCE  
SPRING 2010**

**GRADE 3**

DISTRICT: **MILLARD PUBLIC SCHOOLS (28-0017-000)**

PAGE: 2 OF 2

Performance Level Ranges			Reading				
			Average Scale Score	Total Number of Students*	% Below Standards	% Meets Standards	% Exceeds Standards
	Reading						
Exceeds Standards	135 and above						
Meets Standards	085-134						
Below Standards	084 and below						
STATE SUMMARY			101	21,564	33	47	20
DISTRICT SUMMARY			121	1,739	12	51	37
<b>NORMAN ROCKWELL ELEM SCHOOL (28-0017-020)</b>			114	57	11	63	26
<b>ACKERMAN ELEMENTARY SCHOOL (28-0017-024)</b>			115	87	22	46	32
<b>EZRA MILLARD ELEMENTARY SCH (28-0017-027)</b>			122	66	14	50	36
<b>WILLOWDALE ELEMENTARY SCHOOL (28-0017-028)</b>			120	70	13	57	30
<b>ALDRICH ELEMENTARY (28-0017-031)</b>			133	95	6	37	57
<b>BLACK ELK ELEMENTARY SCHOOL (28-0017-032)</b>			119	100	6	64	30
<b>ROHWER ELEMENTARY SCHOOL (28-0017-033)</b>			119	83	5	65	30
<b>WHEELER ELEMENTARY SCHOOL (28-0017-034)</b>			127	104	9	50	41
<b>REEDER ELEMENTARY SCHOOL (28-0017-038)</b>			120	76	20	42	38
<b>REAGAN ELEMENTARY (28-0017-039)</b>			123	105	9	53	38
<b>UPCHURCH ELEMENTARY (28-0017-040)</b>			131	53	4	53	43

\*Includes students tested plus zero scores for **INV** = Invalid, **OTH** = Other, **PAR** = Parent Refusal, and **SAE** = Student Absent for the Entire Testing Window



**NEBRASKA DEPARTMENT OF EDUCATION  
NEBRASKA STATE ACCOUNTABILITY (NeSA)  
DISTRICT REPORT OF SCHOOL PERFORMANCE  
SPRING 2010**

**GRADE 4**

DISTRICT: MILLARD PUBLIC SCHOOLS (28-0017-000)

PAGE: 1 OF 2

Performance Level Ranges			Reading				
			Average Scale Score	Total Number of Students*	% Below Standards	% Meets Standards	% Exceeds Standards
Reading							
Exceeds Standards	135 and above						
Meets Standards	085-134						
Below Standards	084 and below						
STATE SUMMARY			104	21,195	31	48	21
DISTRICT SUMMARY			123	1,665	12	53	35
<b>BRYAN ELEMENTARY SCHOOL (28-0017-003)</b>			123	60	8	58	33
<b>GRACE ABBOTT ELEM SCHOOL (28-0017-007)</b>			127	71	13	44	44
<b>CODY ELEMENTARY SCHOOL (28-0017-008)</b>			120	26	12	58	31
<b>NORRIS ELEMENTARY SCHOOL (28-0017-009)</b>			100	64	33	56	11
<b>SANDOZ ELEMENTARY SCHOOL (28-0017-010)</b>			118	49	6	71	22
<b>WILLA CATHER ELEMENTARY SCHOOL (28-0017-011)</b>			121	70	19	41	40
<b>HITCHCOCK ELEMENTARY SCHOOL (28-0017-012)</b>			126	26	12	46	42
<b>MONTCLAIR ELEMENTARY SCHOOL (28-0017-013)</b>			119	85	18	46	36
<b>HOLLING HEIGHTS ELEM SCHOOL (28-0017-014)</b>			116	68	21	51	28
<b>J STERLING MORTON ELEM SCHOOL (28-0017-015)</b>			118	72	17	49	35
<b>WALT DISNEY ELEMENTARY SCHOOL (28-0017-016)</b>			120	37	11	65	24
<b>NEIHARDT ELEMENTARY SCHOOL (28-0017-017)</b>			131	102	3	61	36
<b>COTTONWOOD ELEMENTARY SCHOOL (28-0017-018)</b>			115	62	11	61	27
<b>HARVEY OAKS ELEMENTARY SCHOOL (28-0017-019)</b>			138	55	2	49	49

\*Includes students tested plus zero scores for **INV** = Invalid, **OTH** = Other, **PAR** = Parent Refusal, and **SAE** = Student Absent for the Entire Testing Window



**NEBRASKA DEPARTMENT OF EDUCATION  
NEBRASKA STATE ACCOUNTABILITY (NeSA)  
DISTRICT REPORT OF SCHOOL PERFORMANCE  
SPRING 2010**

**GRADE 4**

DISTRICT: **MILLARD PUBLIC SCHOOLS (28-0017-000)**

PAGE: 2 OF 2

Performance Level Ranges			Reading				
			Average Scale Score	Total Number of Students*	% Below Standards	% Meets Standards	% Exceeds Standards
Reading							
Exceeds Standards	135 and above						
Meets Standards	085-134						
Below Standards	084 and below						
STATE SUMMARY			104	21,195	31	48	21
DISTRICT SUMMARY			123	1,665	12	53	35
<b>NORMAN ROCKWELL ELEM SCHOOL (28-0017-020)</b>			120	48	17	50	33
<b>ACKERMAN ELEMENTARY SCHOOL (28-0017-024)</b>			121	83	17	52	31
<b>EZRA MILLARD ELEMENTARY SCH (28-0017-027)</b>			133	63	11	44	44
<b>WILLOWDALE ELEMENTARY SCHOOL (28-0017-028)</b>			116	88	13	65	23
<b>ALDRICH ELEMENTARY (28-0017-031)</b>			130	66	15	35	50
<b>BLACK ELK ELEMENTARY SCHOOL (28-0017-032)</b>			130	85	7	49	44
<b>ROHWER ELEMENTARY SCHOOL (28-0017-033)</b>			119	78	12	59	29
<b>WHEELER ELEMENTARY SCHOOL (28-0017-034)</b>			133	103	4	54	42
<b>REEDER ELEMENTARY SCHOOL (28-0017-038)</b>			124	79	10	53	37
<b>REAGAN ELEMENTARY (28-0017-039)</b>			121	79	10	61	29
<b>UPCHURCH ELEMENTARY (28-0017-040)</b>			131	46	4	52	43

\*Includes students tested plus zero scores for **INV** = Invalid, **OTH** = Other, **PAR** = Parent Refusal, and **SAE** = Student Absent for the Entire Testing Window



**NEBRASKA DEPARTMENT OF EDUCATION  
NEBRASKA STATE ACCOUNTABILITY (NeSA)  
DISTRICT REPORT OF SCHOOL PERFORMANCE  
SPRING 2010**

**GRADE 5**

DISTRICT: **MILLARD PUBLIC SCHOOLS (28-0017-000)**

PAGE: 1 OF 2

Performance Level Ranges			Reading				
			Average Scale Score	Total Number of Students*	% Below Standards	% Meets Standards	% Exceeds Standards
Reading							
Exceeds Standards	135 and above						
Meets Standards	085-134						
Below Standards	084 and below						
STATE SUMMARY			101	20,761	33	48	19
DISTRICT SUMMARY			121	1,602	15	53	33
<b>BRYAN ELEMENTARY SCHOOL (28-0017-003)</b>			120	53	15	53	32
<b>GRACE ABBOTT ELEM SCHOOL (28-0017-007)</b>			126	65	15	49	35
<b>CODY ELEMENTARY SCHOOL (28-0017-008)</b>			108	34	26	53	21
<b>NORRIS ELEMENTARY SCHOOL (28-0017-009)</b>			114	51	20	55	25
<b>SANDOZ ELEMENTARY SCHOOL (28-0017-010)</b>			100	49	22	71	6
<b>WILLA CATHER ELEMENTARY SCHOOL (28-0017-011)</b>			128	66	11	53	36
<b>HITCHCOCK ELEMENTARY SCHOOL (28-0017-012)</b>			143	23	4	30	65
<b>MONTCLAIR ELEMENTARY SCHOOL (28-0017-013)</b>			116	77	23	45	31
<b>HOLLING HEIGHTS ELEM SCHOOL (28-0017-014)</b>			112	68	18	60	22
<b>J STERLING MORTON ELEM SCHOOL (28-0017-015)</b>			122	57	12	61	26
<b>WALT DISNEY ELEMENTARY SCHOOL (28-0017-016)</b>			112	45	27	47	27
<b>NEIHARDT ELEMENTARY SCHOOL (28-0017-017)</b>			114	70	14	60	26
<b>COTTONWOOD ELEMENTARY SCHOOL (28-0017-018)</b>			121	66	20	50	30
<b>HARVEY OAKS ELEMENTARY SCHOOL (28-0017-019)</b>			133	45	9	38	53

\*Includes students tested plus zero scores for **INV** = Invalid, **OTH** = Other, **PAR** = Parent Refusal, and **SAE** = Student Absent for the Entire Testing Window



**NEBRASKA DEPARTMENT OF EDUCATION  
NEBRASKA STATE ACCOUNTABILITY (NeSA)  
DISTRICT REPORT OF SCHOOL PERFORMANCE  
SPRING 2010**

**GRADE 5**

DISTRICT: **MILLARD PUBLIC SCHOOLS (28-0017-000)**

PAGE: 2 OF 2

Performance Level Ranges			Reading				
			Average Scale Score	Total Number of Students*	% Below Standards	% Meets Standards	% Exceeds Standards
	Reading						
Exceeds Standards	135 and above						
Meets Standards	085-134						
Below Standards	084 and below						
STATE SUMMARY			101	20,761	33	48	19
DISTRICT SUMMARY			121	1,602	15	53	33
<b>NORMAN ROCKWELL ELEM SCHOOL (28-0017-020)</b>			108	47	15	68	17
<b>ACKERMAN ELEMENTARY SCHOOL (28-0017-024)</b>			114	95	24	48	27
<b>EZRA MILLARD ELEMENTARY SCH (28-0017-027)</b>			114	65	20	54	26
<b>WILLOWDALE ELEMENTARY SCHOOL (28-0017-028)</b>			124	73	14	45	41
<b>ALDRICH ELEMENTARY (28-0017-031)</b>			143	80	4	43	54
<b>BLACK ELK ELEMENTARY SCHOOL (28-0017-032)</b>			120	106	13	55	32
<b>ROHWER ELEMENTARY SCHOOL (28-0017-033)</b>			137	82	5	44	51
<b>WHEELER ELEMENTARY SCHOOL (28-0017-034)</b>			126	81	9	58	33
<b>REEDER ELEMENTARY SCHOOL (28-0017-038)</b>			117	69	22	52	26
<b>REAGAN ELEMENTARY (28-0017-039)</b>			131	92	4	60	36
<b>UPCHURCH ELEMENTARY (28-0017-040)</b>			125	43	5	60	35

\*Includes students tested plus zero scores for **INV** = Invalid, **OTH** = Other, **PAR** = Parent Refusal, and **SAE** = Student Absent for the Entire Testing Window



**NEBRASKA DEPARTMENT OF EDUCATION  
NEBRASKA STATE ACCOUNTABILITY (NeSA)  
DISTRICT REPORT OF SCHOOL PERFORMANCE  
SPRING 2010**

**GRADE 6**

DISTRICT: **MILLARD PUBLIC SCHOOLS (28-0017-000)**

PAGE: 1 OF 1

Performance Level Ranges		Reading				
		Average Scale Score	Total Number of Students*	% Below Standards	% Meets Standards	% Exceeds Standards
	Reading					
Exceeds Standards	135 and above					
Meets Standards	085-134					
Below Standards	084 and below					
STATE SUMMARY		101	20,495	32	49	20
DISTRICT SUMMARY		116	1,625	17	54	29
<b>MILLARD CENTRAL MIDDLE SCHOOL (28-0017-002)</b>		107	247	28	48	23
<b>MILLARD NORTH MIDDLE SCHOOL (28-0017-006)</b>		121	306	15	54	32
<b>HARRY ANDERSEN MIDDLE SCHOOL (28-0017-025)</b>		110	244	20	56	23
<b>KIEWIT MIDDLE SCHOOL (28-0017-026)</b>		124	274	9	57	33
<b>RUSSELL MIDDLE SCHOOL (28-0017-029)</b>		122	289	11	54	34
<b>BEADLE MIDDLE SCHOOL (28-0017-035)</b>		112	265	20	55	26

\*Includes students tested plus zero scores for **INV** = Invalid, **OTH** = Other, **PAR** = Parent Refusal, and **SAE** = Student Absent for the Entire Testing Window



**NEBRASKA DEPARTMENT OF EDUCATION  
NEBRASKA STATE ACCOUNTABILITY (NeSA)  
DISTRICT REPORT OF SCHOOL PERFORMANCE  
SPRING 2010**

**GRADE 7**

DISTRICT: **MILLARD PUBLIC SCHOOLS (28-0017-000)**

PAGE: 1 OF 1

Performance Level Ranges		Reading				
Reading		Average Scale Score	Total Number of Students*	% Below Standards	% Meets Standards	% Exceeds Standards
Exceeds Standards	135 and above					
Meets Standards	085-134					
Below Standards	084 and below					
STATE SUMMARY		104	20,412	31	48	21
DISTRICT SUMMARY		123	1,653	13	53	35
<b>MILLARD CENTRAL MIDDLE SCHOOL (28-0017-002)</b>		119	255	16	51	33
<b>MILLARD NORTH MIDDLE SCHOOL (28-0017-006)</b>		127	249	13	47	40
<b>HARRY ANDERSEN MIDDLE SCHOOL (28-0017-025)</b>		115	265	17	59	24
<b>KIEWIT MIDDLE SCHOOL (28-0017-026)</b>		127	306	8	53	39
<b>RUSSELL MIDDLE SCHOOL (28-0017-029)</b>		129	287	10	51	40
<b>BEADLE MIDDLE SCHOOL (28-0017-035)</b>		122	291	13	55	32

\*Includes students tested plus zero scores for **INV** = Invalid, **OTH** = Other, **PAR** = Parent Refusal, and **SAE** = Student Absent for the Entire Testing Window



**NEBRASKA DEPARTMENT OF EDUCATION  
NEBRASKA STATE ACCOUNTABILITY (NeSA)  
DISTRICT REPORT OF SCHOOL PERFORMANCE  
SPRING 2010**

**GRADE 8**

DISTRICT: **MILLARD PUBLIC SCHOOLS (28-0017-000)**

PAGE: 1 OF 1

Performance Level Ranges		Reading				
		Average Scale Score	Total Number of Students*	% Below Standards	% Meets Standards	% Exceeds Standards
	Reading					
Exceeds Standards	135 and above					
Meets Standards	085-134					
Below Standards	084 and below					
STATE SUMMARY		102	20,435	30	48	22
DISTRICT SUMMARY		120	1,613	12	54	35
<b>MILLARD CENTRAL MIDDLE SCHOOL (28-0017-002)</b>		111	221	20	54	26
<b>MILLARD NORTH MIDDLE SCHOOL (28-0017-006)</b>		124	237	5	58	37
<b>HARRY ANDERSEN MIDDLE SCHOOL (28-0017-025)</b>		109	279	20	57	23
<b>KIEWIT MIDDLE SCHOOL (28-0017-026)</b>		124	299	10	48	41
<b>RUSSELL MIDDLE SCHOOL (28-0017-029)</b>		127	291	6	52	42
<b>BEADLE MIDDLE SCHOOL (28-0017-035)</b>		122	286	9	54	37

\*Includes students tested plus zero scores for **INV** = Invalid, **OTH** = Other, **PAR** = Parent Refusal, and **SAE** = Student Absent for the Entire Testing Window





**NEBRASKA DEPARTMENT OF EDUCATION  
NEBRASKA STATE ACCOUNTABILITY (NeSA)  
DISTRICT REPORT OF SCHOOL PERFORMANCE  
SPRING 2010**

**GRADE 11**

DISTRICT: **MILLARD PUBLIC SCHOOLS (28-0017-000)**

PAGE: 1 OF 1

Performance Level Ranges		Reading				
	Reading	Average Scale Score	Total Number of Students*	% Below Standards	% Meets Standards	% Exceeds Standards
Exceeds Standards	135 and above					
Meets Standards	085-134					
Below Standards	084 and below					
STATE SUMMARY		100	20,671	32	50	18
DISTRICT SUMMARY		112	1,606	20	55	25
<b>MILLARD SOUTH HIGH SCHOOL (28-0017-001)</b>		100	496	30	55	15
<b>MILLARD NORTH HIGH SCHOOL (28-0017-004)</b>		115	590	19	53	28
<b>MILLARD WEST HIGH SCHOOL (28-0017-030)</b>		122	520	11	57	32

\*Includes students tested plus zero scores for **INV** = Invalid, **OTH** = Other, **PAR** = Parent Refusal, and **SAE** = Student Absent for the Entire Testing Window



**NEBRASKA DEPARTMENT OF EDUCATION  
NEBRASKA STATE ACCOUNTABILITY (NeSA)  
DISTRICT READING INDICATOR SUMMARY  
SPRING 2010**

**GRADE 3**

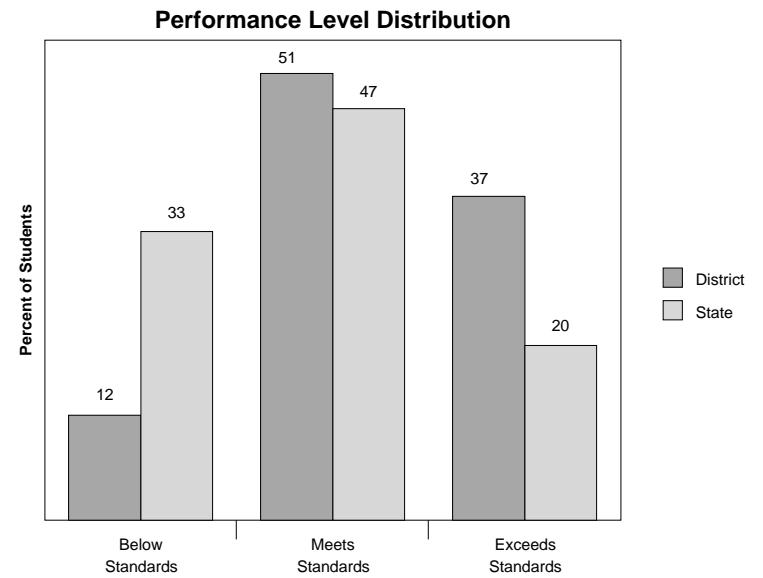
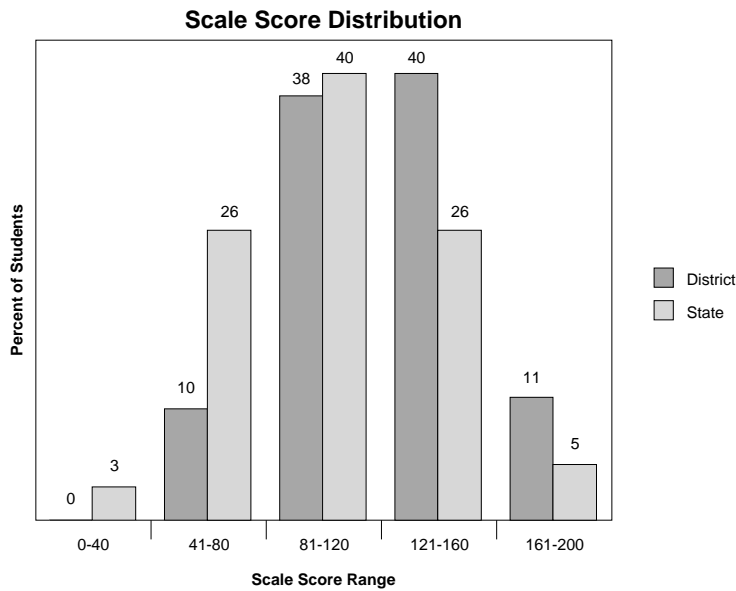
DISTRICT: **MILLARD PUBLIC SCHOOLS (28-0017-000)**

*An indicator is the measurable student demonstration of the state content standards.*

District Statistics	
Number of Students	1,739
<b>Scale Scores</b>	
Mean	121
Median	121
Mode	144
Standard Deviation	034
Range	200
High Score	200
Low Score	000
25 <sup>th</sup> Percentile	098
75 <sup>th</sup> Percentile	144

Indicators with Highest Performance				
Indicator	Possible Raw Score	Average Raw Score		
		School	District	State
LA 3.1.6.b Identify Elements of Narrative Text	4		3.5	3.2
LA 3.1.6.j Generate/Answer Questions	8		6.8	6.0
LA 3.1.6.c Recall and Summarize Narrative Text	4		3.4	3.0

Indicators with Lowest Performance				
Indicator	Possible Raw Score	Average Raw Score		
		School	District	State
LA 3.1.6.e Retell and Summarize Main Idea	5		3.5	3.1
LA 3.1.6.g Apply Knowledge of Text Features	2		1.4	1.2
LA 3.1.5.c Apply Context Clues	4		3.3	3.0





**NEBRASKA DEPARTMENT OF EDUCATION  
NEBRASKA STATE ACCOUNTABILITY (NeSA)  
DISTRICT READING INDICATOR SUMMARY  
SPRING 2010**

**GRADE 4**

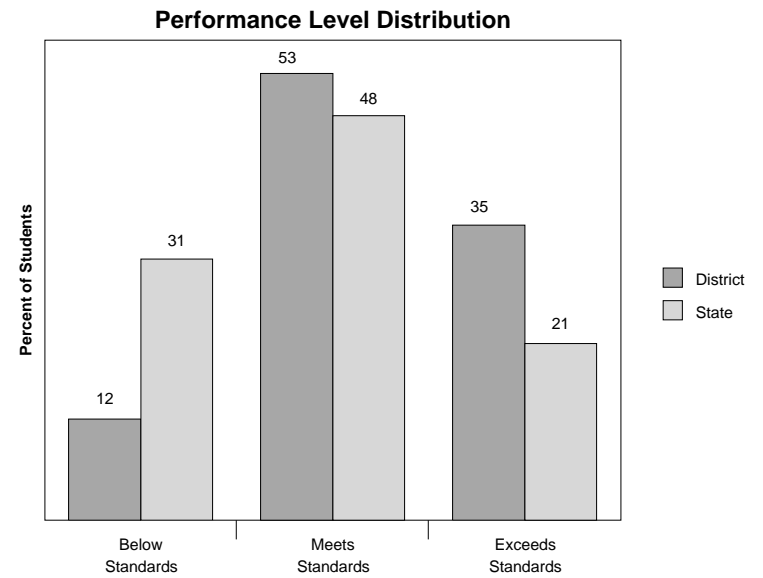
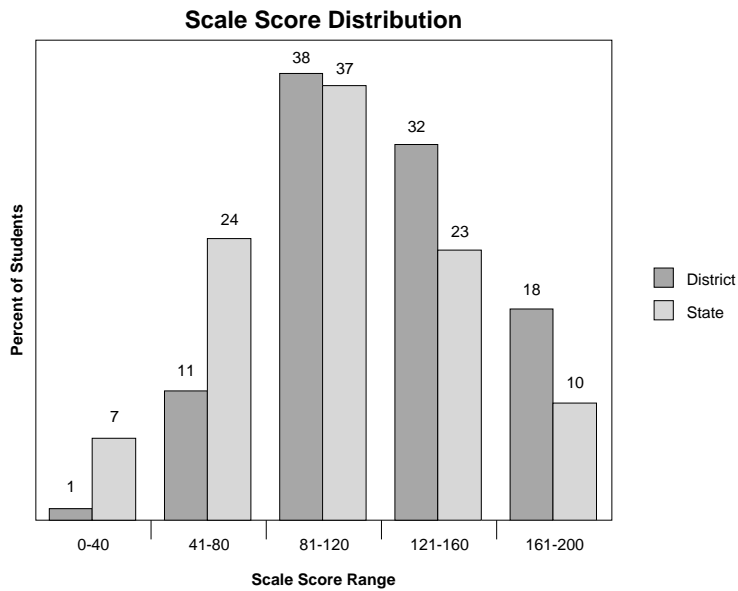
DISTRICT: **MILLARD PUBLIC SCHOOLS (28-0017-000)**

*An indicator is the measurable student demonstration of the state content standards.*

District Statistics	
Number of Students	1,665
<b>Scale Scores</b>	
Mean	123
Median	119
Mode	150
Standard Deviation	036
Range	200
High Score	200
Low Score	000
25 <sup>th</sup> Percentile	102
75 <sup>th</sup> Percentile	150

Indicators with Highest Performance				
Indicator	Possible Raw Score	Average Raw Score		
		School	District	State
LA 4.1.6.h Describe Narrative and Informational Genre	1		0.9	0.9
LA 4.1.6.f Recognize Organizational Patterns	2		1.8	1.6
LA 4.1.6.a Identify Author s Purpose	1		0.8	0.8

Indicators with Lowest Performance				
Indicator	Possible Raw Score	Average Raw Score		
		School	District	State
LA 4.1.6.g Apply Knowledge of Text Features	4		3.0	2.5
LA 4.1.5.a Apply Knowledge of Word Structure Elements	4		3.1	2.9
LA 4.1.6.d Identify Literary Devices	2		1.6	1.3





**NEBRASKA DEPARTMENT OF EDUCATION  
NEBRASKA STATE ACCOUNTABILITY (NeSA)  
DISTRICT READING INDICATOR SUMMARY  
SPRING 2010**

**GRADE 5**

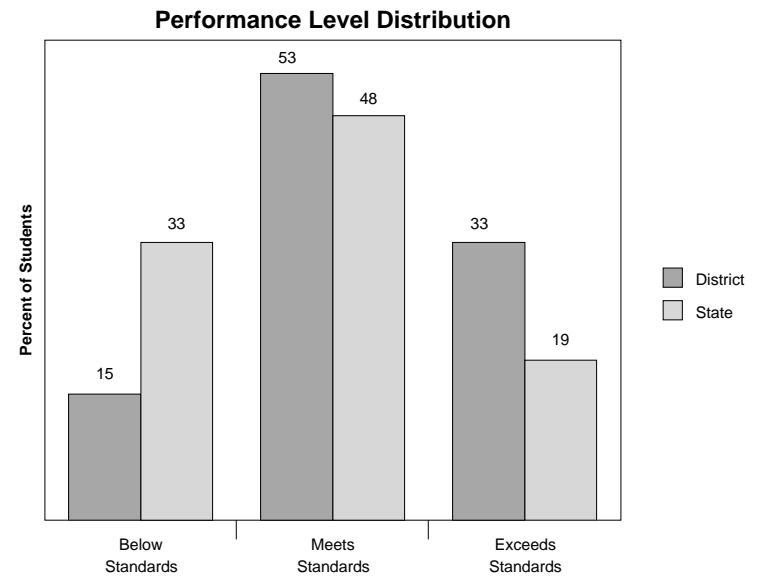
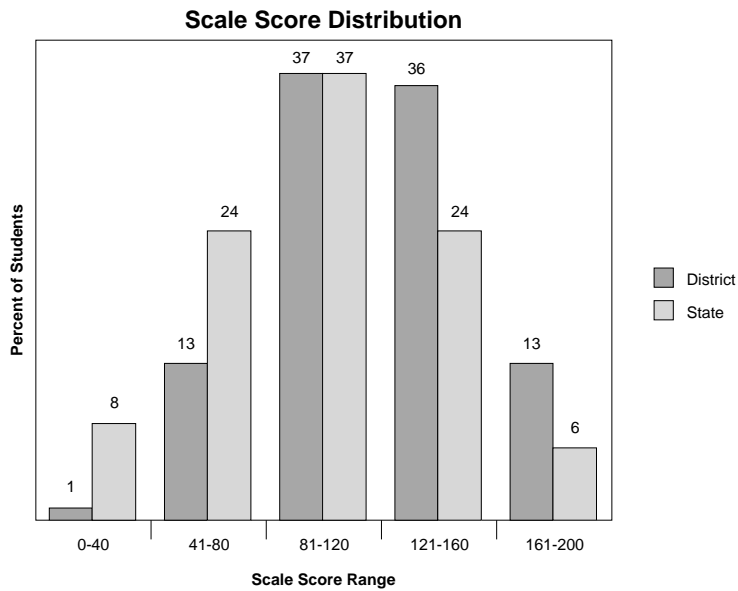
DISTRICT: **MILLARD PUBLIC SCHOOLS (28-0017-000)**

*An indicator is the measurable student demonstration of the state content standards.*

District Statistics	
Number of Students	1,602
<b>Scale Scores</b>	
Mean	121
Median	120
Mode	126
Standard Deviation	038
Range	200
High Score	200
Low Score	000
25 <sup>th</sup> Percentile	098
75 <sup>th</sup> Percentile	149

Indicators with Highest Performance				
Indicator	Possible Raw Score	Average Raw Score		
		School	District	State
LA 5.1.5.c Select and Apply Knowledge of Context Clues	4		3.5	3.1
LA 5.1.6.k Generate/Answer Questions	5		4.3	3.9
LA 5.1.6.c Summarize Narrative Text	2		1.7	1.6

Indicators with Lowest Performance				
Indicator	Possible Raw Score	Average Raw Score		
		School	District	State
LA 5.1.6.d Identify and Explain Use of Literary Devices	2		1.2	1.1
LA 5.1.5.d Identify Semantic Relationships	4		3.0	2.5
LA 5.1.6.g Apply Knowledge of Text Features	1		0.7	0.7





**NEBRASKA DEPARTMENT OF EDUCATION  
NEBRASKA STATE ACCOUNTABILITY (NeSA)  
DISTRICT READING INDICATOR SUMMARY  
SPRING 2010**

**GRADE 6**

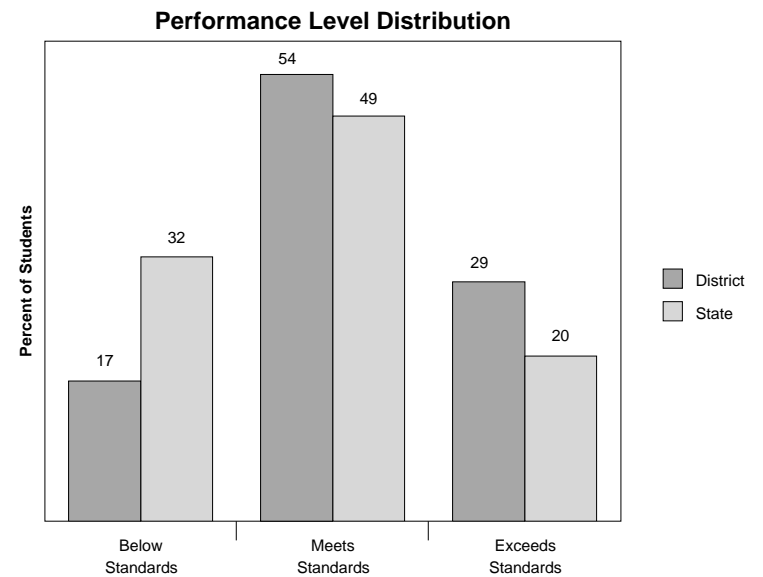
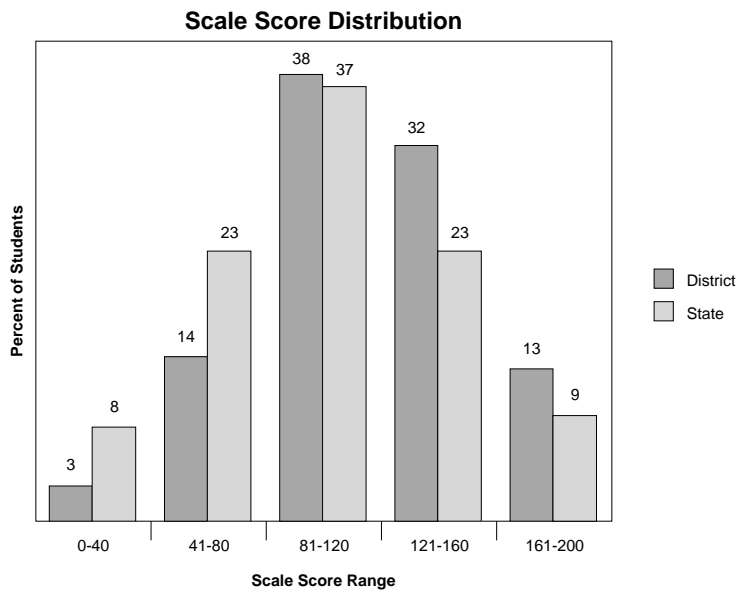
DISTRICT: **MILLARD PUBLIC SCHOOLS (28-0017-000)**

*An indicator is the measurable student demonstration of the state content standards.*

District Statistics	
Number of Students	1,625
<b>Scale Scores</b>	
Mean	116
Median	119
Mode	125
Standard Deviation	037
Range	199
High Score	200
Low Score	001
25 <sup>th</sup> Percentile	093
75 <sup>th</sup> Percentile	141

Indicators with Highest Performance				
Indicator	Possible Raw Score	Average Raw Score		
		School	District	State
LA 6.1.6.c Summarize Narrative Text	3		2.7	2.5
LA 6.1.5.c Select and Apply Knowledge of Context Clues	6		5.3	5.0
LA 6.1.6.d Identify and Explain Use of Literary Devices	2		1.7	1.6

Indicators with Lowest Performance				
Indicator	Possible Raw Score	Average Raw Score		
		School	District	State
LA 6.1.5.d Identify Semantic Relationships	2		1.1	1.1
LA 6.1.5.a Apply Knowledge of Word Structure Elements	4		2.9	2.6
LA 6.1.6.e Summarize and Analyze Main Idea	5		3.7	3.3





**NEBRASKA DEPARTMENT OF EDUCATION  
NEBRASKA STATE ACCOUNTABILITY (NeSA)  
DISTRICT READING INDICATOR SUMMARY  
SPRING 2010**

**GRADE 7**

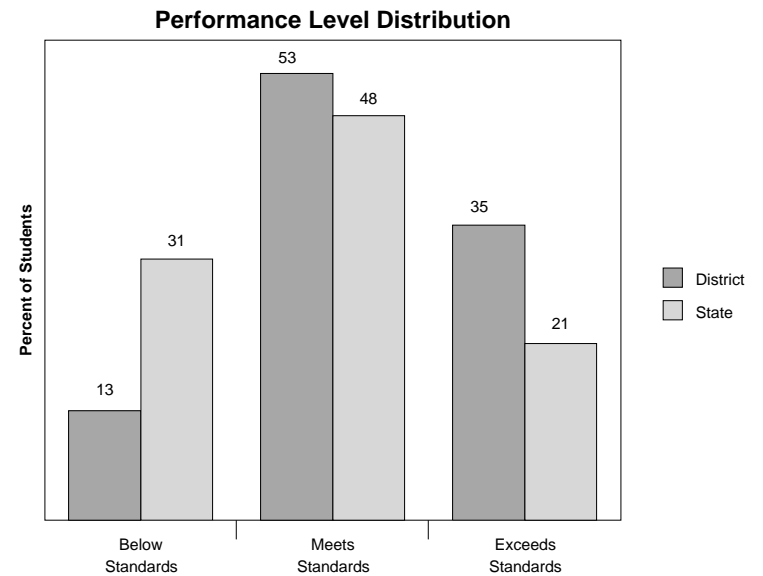
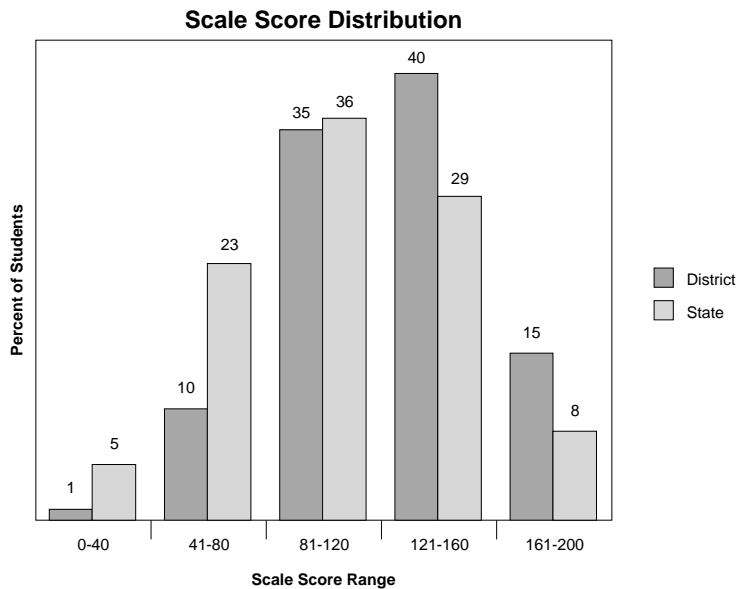
DISTRICT: **MILLARD PUBLIC SCHOOLS (28-0017-000)**

*An indicator is the measurable student demonstration of the state content standards.*

District Statistics	
Number of Students	1,653
<b>Scale Scores</b>	
Mean	123
Median	122
Mode	140
Standard Deviation	035
Range	200
High Score	200
Low Score	000
25 <sup>th</sup> Percentile	098
75 <sup>th</sup> Percentile	147

Indicators with Highest Performance				
Indicator	Possible Raw Score	Average Raw Score		
		School	District	State
LA 7.1.6.c Analyze Author's Use of Literary Devices	1		0.9	0.8
LA 7.1.6.f Apply Knowledge of Text Features	2		1.8	1.5
LA 7.1.5.a Determine Meaning of Words through Structural Analysis	3		2.6	2.3

Indicators with Lowest Performance				
Indicator	Possible Raw Score	Average Raw Score		
		School	District	State
LA 7.1.5.d Analyze Semantic Relationships	4		2.5	2.2
LA 7.1.6.g Make Inferences based on Narrative and Informational Genre	1		0.6	0.6
LA 7.1.6.e Apply Knowledge of Organizational Patterns	6		4.0	3.3





**NEBRASKA DEPARTMENT OF EDUCATION  
NEBRASKA STATE ACCOUNTABILITY (NeSA)  
DISTRICT READING INDICATOR SUMMARY  
SPRING 2010**

**GRADE 8**

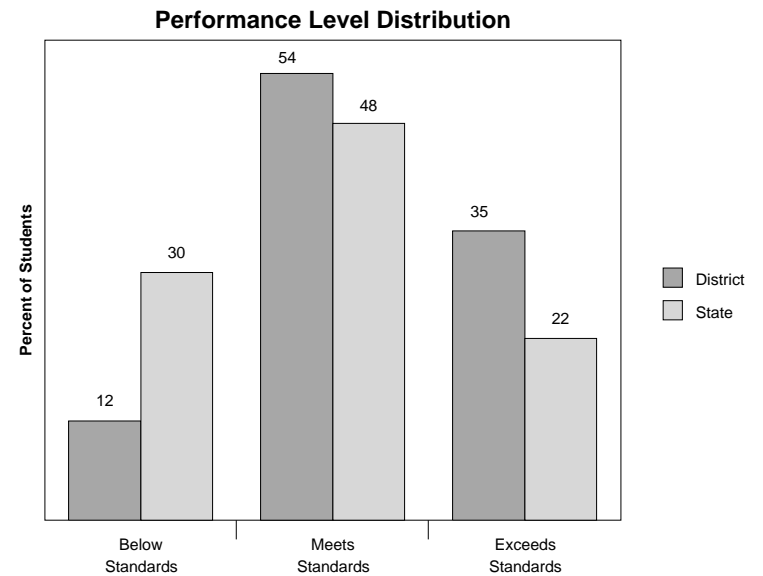
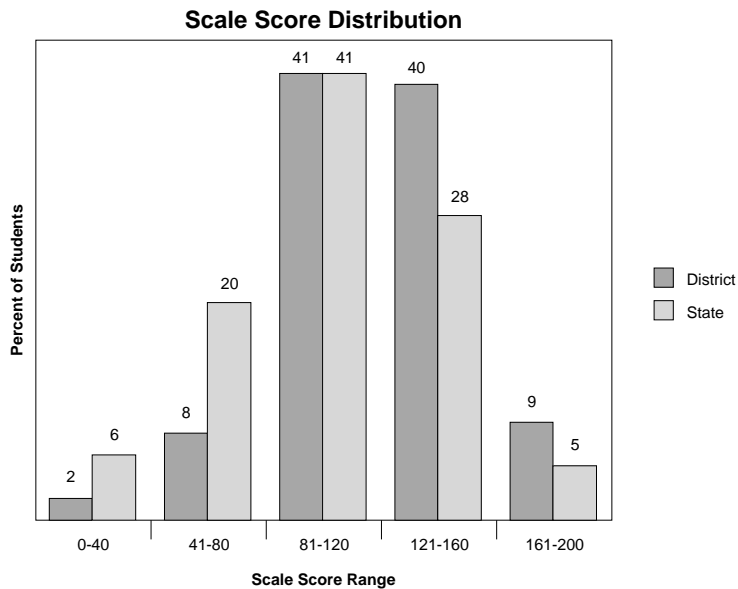
DISTRICT: **MILLARD PUBLIC SCHOOLS (28-0017-000)**

*An indicator is the measurable student demonstration of the state content standards.*

District Statistics	
Number of Students	1,613
<b>Scale Scores</b>	
Mean	120
Median	117
Mode	128
Standard Deviation	034
Range	200
High Score	200
Low Score	000
25 <sup>th</sup> Percentile	100
75 <sup>th</sup> Percentile	141

Indicators with Highest Performance				
Indicator	Possible Raw Score	Average Raw Score		
		School	District	State
LA 8.1.5.c Select and Apply Appropriate Context Clues	4		3.5	3.3
LA 8.1.5.d Analyze Semantic Relationships	4		3.4	3.0
LA 8.1.6.c Analyze Author's Use of Literary Devices	3		2.5	2.2

Indicators with Lowest Performance				
Indicator	Possible Raw Score	Average Raw Score		
		School	District	State
LA 8.1.5.a Determine Meaning of Words through Structural Analysis	4		2.5	2.2
LA 8.1.6.e Apply Knowledge of Organizational Patterns	5		3.6	3.2
LA 8.1.6.g Make Inferences based on Narrative and Informational Genre	2		1.5	1.4





**NEBRASKA DEPARTMENT OF EDUCATION  
NEBRASKA STATE ACCOUNTABILITY (NeSA)  
DISTRICT READING INDICATOR SUMMARY  
SPRING 2010**

**GRADE 11**

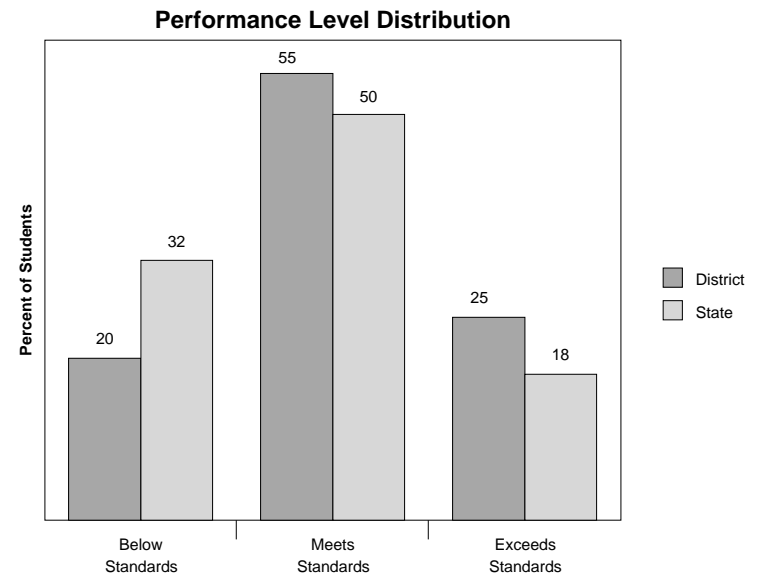
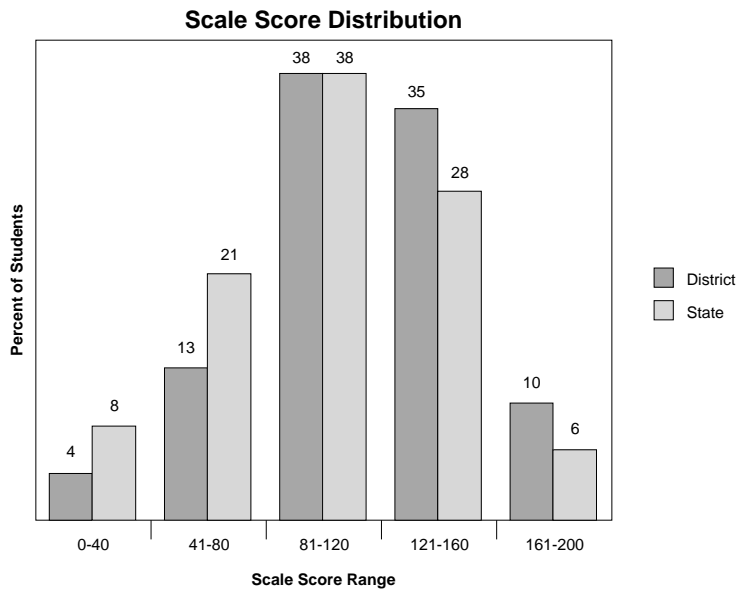
DISTRICT: **MILLARD PUBLIC SCHOOLS (28-0017-000)**

*An indicator is the measurable student demonstration of the state content standards.*

District Statistics	
Number of Students	1,606
<b>Scale Scores</b>	
Mean	112
Median	116
Mode	121
Standard Deviation	038
Range	200
High Score	200
Low Score	000
25 <sup>th</sup> Percentile	089
75 <sup>th</sup> Percentile	140

Indicators with Highest Performance				
Indicator	Possible Raw Score	Average Raw Score		
		School	District	State
LA 12.1.6.e Apply Knowledge of Organizational Patterns	5		4.3	4.0
LA 12.1.6.j Generate/Answer Questions	7		5.6	5.3
LA 12.1.6.b Identify and Analyze Elements of Narrative Text	6		4.7	4.4

Indicators with Lowest Performance				
Indicator	Possible Raw Score	Average Raw Score		
		School	District	State
LA 12.1.6.c Analyze Author's Use of Literary Devices	3		1.8	1.6
LA 12.1.6.a Apply Knowledge of Author's Purpose	5		3.1	2.8
LA 12.1.5.d Analyze Semantic Relationships	1		0.6	0.6





	Grade 3	Grade 4	Grade 5	Grade 6	Grade 7	Grade 8	Grade 11
State	33	31	33	32	31	30	32
Millard	12	12	15	17	13	12	20
Bellevue	30	33	30	29	28	23	23
Bennington	13	20	18	17	3	13	12
DC West	34	6	35	33	12	33	19
Elkhorn	17	15	20	18	19	13	16
Gretna	15	19	19	15	19	16	26
OPS	46	45	48	43	54	53	52
Papillion-La Vista	25	23	24	21	23	16	20
Ralston	36	31	36	33	32	28	35
South Sarpy	36	31	23	26	19	15	34
Westside	24	21	20	18	28	26	21
(Lincoln)	24	19	24	29	26	24	33

